

## PROJECT INFORMATION

### What is the Project Area?

The approximately 4.5- mile corridor stretches along Whiskey Road (SC 19) from the intersection at Powderhouse Road (S-440) to Eagle Road (C-2867) on the northern edge of the City of New Ellenton.

### Public Comment

Aiken County and the South Carolina Department of Transportation are seeking public input regarding the findings contained in the Feasibility Study. Public feedback helps the project team to refine its recommendations and designs. It also alerts the project team of potential transportation issues more likely to be known by local residents that drive the corridor frequently. Please review the materials provided and submit your comments in any of the ways listed in the **“Requested Feedback”** section on this page.

**We look forward to your input.**

### Project Contact:

Joel T. Duke,  
Aiken County Planning & Development  
1930 University Parkway, Suite 2800  
Aiken, SC 29801  
Email:  
[Tplanning@aikencountysc.gov](mailto:Tplanning@aikencountysc.gov)

Phone: (803) 642 - 1520



## PROJECT GOALS

- Enhance and expand on the Whiskey Road Corridor Study completed by the ARTS MPO in July 2017.
- In cooperation with the project team and a stakeholder group, develop strategies and projects that maintain the corridor's role as primary arterial while allowing access to present and future commercial and residential uses.
- Evaluate current roadway demand and service deficiencies.
- Forecast growth and expected land uses within the corridor and other nearby areas served by the corridor.
- Project future demand and service deficiencies. Evaluate future demand scenarios based on alternative build-out scenarios in the corridor.
- Formulate corridor specific land use regulations and access management policies that implement the identified development strategy.
- Identify primary intersections, evaluate current deficiencies and possible corrections, and recommend actions to protect and preserve the intersection.
- Prioritize projects identified during study based on criteria defined by the project team and stakeholder groups.
- In conjunction with the SCDOT, complete a feasibility study for identified high priority projects.

### What is the Project Purpose?

The Whiskey Road Feasibility Study was initiated in March 2022 and is anticipated to conclude by the summer of 2023. The study will help create a safety plan for the 4.5- mile section of Whiskey Road (SC-19) beginning at the intersection of Powderhouse Road (S-440) and ending at Eagle Road (C-2867). High priority projects will address driver, cyclist, and pedestrian safety as well as traffic congestion.

### Requested Feedback

Participants can provide written comments in the following ways:

- ✓ Mail comments to Aiken County Planning and Development at 1930 University Parkway, Suite 2800, Aiken, SC 29801
- ✓ Email your comments to: [Tplanning@aikencountysc.gov](mailto:Tplanning@aikencountysc.gov)
- ✓ Attend the February 28<sup>th</sup> in-person meeting and place a comment in the comment box provided

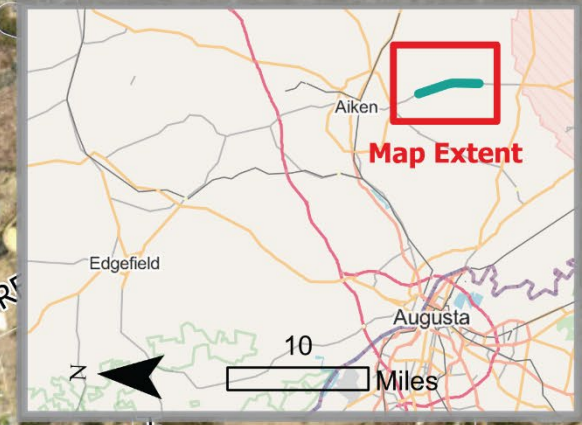
**Comments accepted thru May 12, 2023.**

## ANTICIPATED STUDY SCHEDULE

Public Comment Period	spring 2022 to spring 2023
Study Ongoing	spring 2022 to spring 2023
Final Recommendations	summer 2023



## PROJECT LOCATIONS



## Project Ranking

- 1 Powderhouse Road (S-440)
- 2 Chime Bell Church Road (S-816)
- 3 Citadel Drive (S-333)
- 4 Crosby Road (S-1755)
- 5 Chukker Creek Road (S-1562)
- 6 Southmeadows Boulevard
- 7 Talatha Chuch Drive / Dominion Drive
- 8 Eagle Road / Dry Branch Road (S-504)

