

A photograph showing a street lined with large, ancient trees whose thick, gnarled branches are heavily covered in bright green moss. The branches arch over the road, creating a natural tunnel effect. Sunlight filters through the dense foliage. In the background, a street sign for 'MARLBORO' is visible on the right, and a yellow diamond-shaped sign is on the left. A car is partially visible in the distance.

Official Visitor Guide to
Aiken County, SC

It's time to visit the place you've heard so much about.

Our Time Line:

1500--Hernando Desoto was welcomed by the Cofachiqui tribe at Point Comfort, west of the Savannah River Site. He came in search of silver rumored to be in the bluffs. He found his brother in a grave instead and angrily kidnapped the Queen of the tribe, Cacicque, and stole fourteen bushels of freshwater pearls.

1685--The most important interior trading post was at Savan-
no Town (Beech Island). Indian Nations from Georgia, Alabama,
North Carolina, Mississippi and Tennessee carved trails to the
post in order to exchange furs and European goods arriving from
the port of Charleston, SC. In 1716, conflict spread between the
colonists and the Native Americans. Out of necessity, the post
became Fort Moore.

1832--The 'Best Friend' became the world's longest steam en-
gine railway. The 136 mile track followed the path of the Creek/
Chickasaw tribes from Hamburg (North Augusta) to Charleston,
SC. People felt as if the railroad were their best friend due to the
ability to transport their crops: cotton, tobacco, and flour.

1865--The Battle of Aiken was one of the last Confederate
victories on Feb. 11th. After the Civil War, Aiken County was the
only county born during reconstruction. Prince Rivers, Samuel
Lee and Charles Hayne, all African Americans, were credited for
founding Aiken County in 1871. Aiken County was carved from
sections of Orangeburg, Edgefield, Lexington and
Barnwell counties.

1876--On July 4th, the 9th Regiment of the National Guard,
was practicing drills on a street in Hamburg (North Augusta,
SC). Two Ex-Confederate Generals from Edgefield were travel-
ing through and demanded the unit move. The captain refused
at first because he felt there was plenty of room for the men to
pass. Humiliated, the men told their story and a rumor resulted
that the militia would have to surrender their guns. Gen. M.C.
Butler, attorney for the two men, and 300 others came to take
the guns. Justice Rivers and Gen. Butler were in discussion
when gunfire erupted, killing five and wounding three. Hamburg
residents were robbed and fire was set to several homes.

1900--The Winter Colony was born out of bitter winters in the
north. Wealthy people began to flock to the Aiken area to escape
and they brought their horses for pleasure. Polo, fox hunting and
racing became favorite activities and remain so today.

1950--The face of the world changed with the construction of
the nuclear producing, Savannah River Site. The Savannah River
Site was built in Aiken and Barnwell Counties in order to pro-
duce tritium and plutonium. Entire towns were moved to make
way for the "bomb plant." Nuclear materials are no longer pro-
duced on site. The 310 sq. mile facility plays a vital role in the
defense waste management, energy research and nonprolifera-
tion. One of the nations premier applied science laboratories,
the Savannah River National Laboratory is also on the property.
This research lab focuses on energy security, environmental
technologies and homeland securities.

Contents

General Information

Accommodations	26-27
Area Maps	28-31
Cultural, Historic Groups	5
County, City Governments.....	4
Libraries	5
Medical Services	6
Our Time Line	inside cover
Rental Facilities	42
Transportation	6
Visitor Services	4

Towns

Aiken.....	7-11
Beech Island, Silver Bluff, Jackson.....	12-14
Couchton, Eureka, Perry, New Ellenton	20
Graniteville, Horse Creek Valley	14-15
North Augusta	16-19
Montmorenci, Monetta & Salley	21-23
Wagener, White Pond, Windsor.....	24

Attractions

Aiken County Park System.....	49-51
Annual Events	51-53
Antiques and Gifts	54-55
Camping.....	27
Equestrian & Polo	32-36
Fishing & Hunting	40-41
Golf.....	43-44
Heritage Preserves & Nature Trails	54-55
Hiking, Riding & Walking Trails	36-39
Horse Play Horses	45-48
More Places to Play.....	50-51
Rowing Facilities.....	16
South Carolina National Heritage Corridor.....	25
South Carolina State Parks, Welcome Centers.....	25
Special Events	53-55
Tours	32

Visitor Services

Aiken County PRT Visitor Center 803-642-7557
113 Laurens St., Suite 107, Aiken, SC 29801
www.aikencountysc.gov/tourism

Aiken Downtown Dev. Association 803-649-2221
208 The Alley, Aiken 29801

City Of Aiken Tourism 1-888-AikenSC
PO Box 1177, Aiken 29802 www.cityofaikensc.gov

Aiken Chamber of Commerce 803-641-1111 / 800-542-4536

121 Richland Ave., Aiken 29801 www.aikenchamber.net

Midland Valley Chamber of Commerce 803-593-3030
P.O. Box 310, Langley 29834

North Augusta Chamber of Commerce 803-279-2323
302 Georgia Ave., NA 29841 www.northaugustachamber.org

SC Welcome Center/I-20 803-279-6756
PO Box 6728, North Augusta 29841 www.discoversouthcarolina.com

Thoroughbred Country 803-649-7981 / 888-834-1654
PO Box 850, Aiken, SC 29802 www.tbredcountry.org

Directory Assistance
803- 555-1212

Aiken County Government

www.aikencountysc.gov

Government Information 803-642-1500
Administrative Offices 803-642-2012
Clemson University Co-op Extension 803-649-6297
SC Forestry Commission 803-648-4911
SC Land Resources Conservation 803-648-6491
Aiken County Council 803-642-1690
Economic Development Partnership 803-648-3362
Health Department 803-642-1687

City & Town Halls

City of Aiken 803-642-7654

214 Park Ave. SW, Aiken 29801 www.cityofaikensc.gov
Burnettown Town Hall 803-593-2676
P.O. Box 994, Bath, 29815

Jackson Town Hall 803-471-2228
106 Main St., PO Box 386, Jackson 29831-0386

Monetta Town Hall 803-685-5258
21 Walden St., Monetta 29105-0008

New Ellenton City Offices 803-652-2214
200 Main St. South, New Ellenton 29809 www.newellenton.com

North Augusta City Offices 803-441-4202
400 East Buena Vista Ave., N.A. 29841 www.northaugusta.net

Perry Town Hall 803-564-5756
147 Center St. East, Perry 29137

Salley Town Hall 803-258-3485
161 Railroad Ave. North, Salley 29137

Wagener Town Hall 803-564-3412
122 Earl St., PO Box 400, Wagener 29164-0400

Windsor Town Hall None
Mt. Beulah Rd., PO Box 1, Windsor 29856-0001

Cultural & Historical Groups

Aiken Artist Guild 803-642-1953

Aiken Center For The Arts 803-641-9094

Aiken Choral Society 803- 648-1252/649-6367

Aiken Civic Ballet 803-648-5771

Aiken Community Playhouse 803-648-1438
Box Office: 124 Newberry St., Aiken (Washington Ctr. for Performing Arts)

Aiken County Historical Society 803-649-6050
www.aikencountyhistoricalsociety.org

Aiken Symphony Guild 803-641-8288

Beaver Creek Band of Pee Dee Indians 803-258-1901

Beech Island Historical Society 803-867-3600
www.beech-islandhistory.org

Historic Aiken Foundation 803-649-3380

Hitchcock Foundation 803-642-0528

Horse Creek Historical Society 803-663-1819


Little Horse Creek Amer. Indian H.A 803-646-7339

Olde Towne Preservation Association 803-279-7560
www.colonialtimes.us

North Augusta Arts and Heritage Council 803-441-4380
www.artsandheritagecenter.com

North Augusta Cultural Arts Council 803-442-7588
www.naartscouncil.org

St. Andrews Society of Aiken 803-649-7374



This brick warehouse/barn was built in the 1880's by Beech Island businessman, Luther Hankinson. It was constructed of bricks made at his brick factory in Hamburg, S.C. After Hankinson's death, his property was sold George McElmurray. McElmurray's heirs donated the two buildings and the acre of land to the Beech Island Historical Society. Currently it is under renovation and will be the home of the Beech Island Agricultural Museum and Visitor Center.

Libraries

www.unicorn.abbe-lib.org

Aiken County Main Branch 803-642-2020
314 Chesterfield St, Aiken 29801

Jackson Branch 803-471-3811
106 Main St., Jackson 29831

Midland Valley 803-593-7379
9 Hillside Rd., Bath 29816

Nancy Carson 803-279-5767
135 Edgefield Rd., North Augusta 29841

New Ellenton Branch 803-652-5407
407 Main St., New Ellenton 29809

Nancy Bonnette Branch 803-564-5396
204 Park St., Wagener 29164

Medical Services

Aiken Regional Medical Centers 202 University Pkwy., Aiken, SC	803-641-5000
Doctor's Hospital 3651 Wheeler Rd., Augusta, GA	706-651-3232
Medical College of Georgia 1446 Harper St., Augusta, GA	706-721-0211
St. Joseph Hospital 2260 Wrightsboro Rd., Augusta, GA	706-481-7000
University Hospital 1350 Walton Way, Augusta, GA	706-722-9011
Augusta VA Medical Center 1 Freedom Way, Augusta GA	706-733-0188
Walton Rehabilitation Hospital 1344 Independence Dr., Augusta, GA	800-366-6055
Aiken County Sheriff (911)	800-922-9709
Non-emergency #	803-642-1761
SC Highway Patrol	803-641-7655
Poison Control	803-648-7000
Ask A Nurse	706-737-8423

Transportation Airports

Aiken Municipal Airport 129 Aviation Blvd., Aiken, SC 7 miles north of Aiken on US 1. Rental cars, catering, meeting rooms, limousine services	803-648-9299
Augusta Regional Airport 1501 Aviation Way, Augusta, GA Most major airlines served and rental cars are available	706-798-3236
Daniel Field Aviation Airport	706-733-8970

Bus Services & Amtrack

Aiken County Transit System	803-642-1525
Best Friend Express (Bus) Shuttle (North Augusta, SC / Aiken, SC / Augusta, GA)	803-648-6493
Bus Station of Aiken 153 Pendleton St., NW, Aiken, SC Daily routes to most major Southeast cities	803-648-6894
Bus Terminal of Augusta 1128 Greene St., Augusta, GA Served by Southeastern Stages and Greyhound	706-722-6411
Savannah River Charters & Tour (Bus)	803-202-1009
Amtrack, Tickets & Tours 202 S. Palmetto Ave., Denmark, SC	803-793-3369

Auto/Limousine Rentals

Aiken Limousine & Transportation.....	803-648-9977
Alamo Rent A Car	800-327-9633
Avis Rent A Car	800-331-1212
CSRA Limousine, Inc.....	803-819-0555
Enterprise Rent A Car.....	800-736-8222/803-593-6921
Ford Rent-A-Car.....	803-593-3700
National Car Rental.....	800-227-7368
Southside Executive Limousine.....	803-644-9504
Thrifty Car Rental.....	803-663-7368
Waters Vans and Car Rentals.....	803-663-9600
Aiken Taxi	803-642-9910
Mycar Transportation.....	803-794-4777

Aiken

Aiken gained a reputation during its first 100 years as “a place for a splendid time to be had”. Those words reign true today. Once a summer retreat for Charlestonians escaping the threat of malaria, Aiken became a Winter Colony during the late 1800’s. The “grand health resort” had the perfect climate and a healing combination of warm dry air scented with pine and spring water. Equestrians began to bring horses for pleasure. Grandiose cottages and stables sprang up everywhere. Polo is played on Sunday afternoons just as it was in 1882. A 200 year old ambiance is embraced by Aiken residents and visitors alike. Amidst the bustling downtown area is the envied model of land preservation at its finest. Hitchcock Woods, America’s largest urban forest, has over 2100 acres of pristine land.

University of SC at Aiken

471 University Pkwy., 803-648-6851. One of the best comprehensive colleges in the South, offering undergraduate degrees. On site: Ruth Patrick Science Center, Etheredge Center, DuPont Planetarium, Convocation Center, and Gregg Graniteville Library.
www.usca.edu

Aiken Technical College

US Hwy. 1/78, PO Box 696, 803-593-9231. This is one of the state’s leading technical training facilities, providing hands-on training in the areas of metalworking, health services, radiology and, through a unique program, fire detection.
www.aik.tec.sc.us

Aiken County Farmers Market

115 Williamsburg St., 803-642-7761. Open year-round. Peak season: May - November. Mon.-Sat./7:30 am until sold out. Site of the historic old Aiken Cotton Platform and Sale.

Aiken County Historical Museum

433 Newberry St., 803-642-2015. Originally named Banksia. The 1931 “Winter Colony” mansion is one of only two open to the public. A unique gift shop, an 1890’s one-room school house and an 1808 log cabin are also on the property. Hours: (T-F) 10a-5p & (Sat.-Sun.) 2p-5p, Closed on Mondays.



Aiken County Library

314 Chesterfield St., 803-642-2020. The magnificent brick building was built in 1891 as part of the Aiken Institute. During the 1980's, it was the 2nd oldest school in South Carolina. The building is an ideal setting for the motion picture industry. It was filmed as the school for the movie, "That Darned Cat." A small meeting space is available for non-profit organizations.

MON/WED/FRI (10-6), TUES/THURS (10-9), SAT (10-4), SUN (2-6)

www.abbe-lib.org

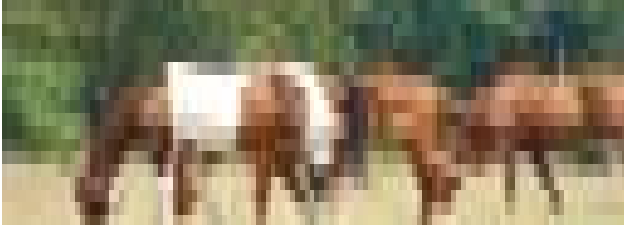
Aiken County Veterans Park

Richland Ave. & Hwy 118. The large monument is made of black granite and is engraved with names of Aiken County veterans who perished in the line of duty. There are seven illuminated flag poles: one for each of the four armed services, one in memory of POW and MIA, one for the Coast Guard and one with the national and state flags. Open daylight hours.

Aiken Equestrian District

East of Whiskey Rd. Dirt roads, polo fields, fencing, training farms, horse crossing signs and race tracks are easily visible in this area. Horses/ trainers most often seen November-March.

NOTE: Speed limit is 15 mph while in this area. STOP for horses/riders to motion you to pass.



Boyd Observatory

803-642-0314. 373 Boyd Pond Rd., Aiken, This private research facility at Aiken County's Boyd Pond Park can accommodate groups of 12. Weekend programs, beginning at sundown, are designed to expose young visitors to basic science of astronomy. Reserv. recommended. www.boydobservatory.com

DuPont Planetarium

University of South Carolina-Aiken, 471 University Pkwy., 803-641-3654. This 45-seat planetarium has a state-of-the-art special effects system and is augmented by sundials and telescopes. Reservations recommended. <http://rpsec.usca.edu/DupontPlanetarium>

*General Showtimes: Sept. – May: 7 and 8 pm
June – August: 8 pm, Digistar Special Effect Showtimes:
December: 9 pm, June-August: 9 pm*

Coker Springs

Coker Springs Rd. This location was the primary watering source for Aiken until 1890. Servants gathered at the popular watering hole to do laundry and socialize. The spring was part of an original land grant to Ephraim Franklin in 1791. It was covered with a springhouse constructed in the 1800's and restored in 1972. It also served as a railroad stop during the mid 1800's.



Downtown Aiken

Surrounded by a one-of-a-kind parkway system and bordered by beautiful flower beds, historic downtown Aiken offers unique dining and shopping experiences which includes art galleries, antiques, gift shops, a brew pub and a variety of restaurants. Golf courses and Aiken's equestrian and historic district border the downtown area. www.downtownaiken.com

Aiken Center For The Arts

122 Laurens St., SW 803-641-9094. The center features regular gallery exhibits by local, state and regional artists. A variety of artists display works for sale year-round in the gallery store. The center also hosts programs and events throughout the year and offers instruction in a variety of mediums. Open Mon.-Sat., 10am-4pm www.aikencenterforthearts.org

Washington Center For The Performing Arts

126 Newberry St., 803-648-1438. Home to the Aiken Community Playhouse (ACP). The theater seats approximately 300 in addition to the 32 seat Hospitality Suite/Balcony and is available for rent when not in use by the ACP. The balcony may be reserved during performances for a fee plus the cost of tickets. Box Office Hours are Tues.-Fri., 9 am- 2 pm. Closed 12-1pm.

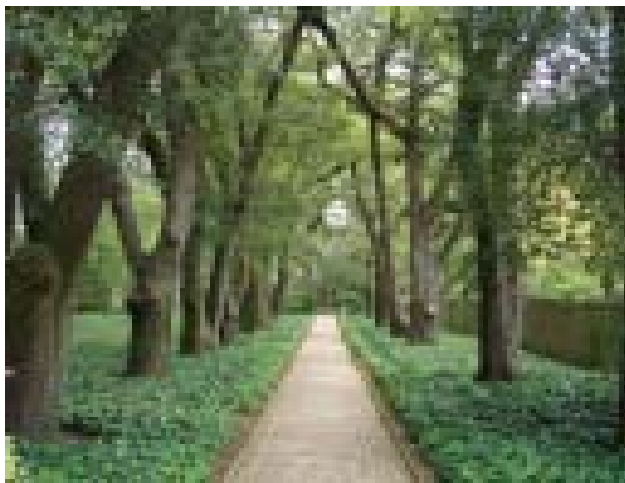
www.aikencommunityplayhouse.com

Winter Colony & Historic District Tour

Enjoy a tour of the Winter Colony and Historic Districts each Saturday at 10 am. Reservations are requested by Thursday prior. City of Aiken Parks, Recreation and Tourism at 803-642-7631. Tours depart from 124 Newberry St.

at The Washington Center. www.cityofaikensc.gov

Northern residents fled to the Aiken area during bitter winters as Charlestonians fled during the summer months. News spread quickly that the area's pine-scented dry air and spring water were quite a healing combination. Horses were also brought along for enjoyment during the 1800's. The area became a prestigious health resort and also, the "Sporting Capital of the South." Large estates or "cottages" are located in the historic districts. Many are on the National Register of Historic Places.



Hopelands

135 Dupree Pl., 803-642-7650 or 803-642-7631. This former 14-acre estate of Mr. and Mrs. C. Oliver Iselin was transformed into a public garden in 1969. A Touch and Scent Trail was developed for the visually impaired. The on-site stage hosts a variety of performances, including a summer concert series on Mon. evenings from May - August. Story Time in the Gardens is held on Tues. at 4 pm, during March-May and Sept.- October. Christmans in Hopelands is a featured annual event in December. Open year round, dawn-dusk.

www.cityofaikensc.gov

Rye Patch and Carriage Museum

100 Berrie Rd. 803-642-7650 or 803-642-7631. The 1905 Winter colony Estate is available for tours by appt. only. The Rye Patch and the Guest Cottage may also be rented for special occasions. www.cityofaikensc.gov



Thoroughbred Racing Hall of Fame & Museum

135 Dupree Place, 803-642-7650 or 803-642-7631 The areas rich thoroughbred racing history is displayed at the museum located in Hopelands. It features art and photography, racing silks, trophies and other memorabilia. Open to the public since 1977. Open Sept. - May, (2-5 p) Tues-Fri., (10a-5p) Saturday, (2-5p) Sunday. www.aikenracinghalloffame.com

USCA Convocation Center

375 Robert Bell Pkwy., 803-643-6901. This state of the art facility hosts family oriented athletic events, trade shows, and nationally renowned concerts and performers throughout the year. Call or visit www.georgialinatix.com for event information, presented by SRP Federal Credit Union .

Etherredge Center

471 University Pkwy., 803-641-3305. Located on the campus of the University of South Carolina-Aiken. Houses an art gallery, the

O'Connell Theater and a larger Mainstage theater. A variety of University and community events are presented throughout the year including: Art Shows, The Cultural Series, University Theater, Music and Choral performances, children's programs and benefits, meetings, lectures and academic programs.

Visit on-line at www.usca.edu/ec

Hitchcock Woods

A 2,100 acre preserve located adjacent to the historic Winter Colony District. It is the largest urban forest in the United States. There are 65 miles of walking and riding trails featuring unique plants and animals. The Hitchcock Foundation encourages passive recreation to preserve the integrity and tranquility of the forest. Enter at South Boundary or Dibble Rd. during daylight hours. Motorized vehicles or bicycles are not allowed. 803-642-0528. www.hitchcockwoods.com



Rose Hill

221 Greenville St. NW, 803-648-1181. This secluded historic garden estate, exudes a timeless charm behind walls that enclose an entire downtown city block. A beautiful chapel, gazebo, gardens are on the grounds. Welcome beverage, maid service, continental breakfast, Sheffield's bar and clubroom are part of the experience. Overnight and long term stay available. Rooms with private baths or group accommodations for up to 21. www.rosehillestate.com

The Willcox

100 Colleton Ave., 803-648-1898 or 877- 648-2200. The elegant inn of the late 1800's has a flavorful past as a gathering place for aristocracy. The old-fashioned Southern Inn is listed on the National Register of Historic Places. The Inn offers suites and rooms elegantly appointed with period antiques, cloud soft beds and deep soaking tubs. A small intimate spa and pool are on the property. Breakfast, lunch and dinner and more. 15 guest rooms and 7 suites. www.thewillcox.com

Beech Island & Jackson

The name, Beech “Highland” as it was originally called, was due to the many Beech Trees on the high terrain.

Over the years, the cockney accent was dropped and it became Beech Island. In 1760, Irishman George Galphin built a trading post upon the Cofachiqui Indian site. During the Revolutionary War, it became Fort Galphin. In 1856, the Beech Island Agricultural Club was organized and is one of South Carolina’s oldest surviving societies.

Beech Island Historical Society

144 Old Jackson Hwy., 803-867-3600

www.beech-islandhistory.org

The Beech Island Historical Society has information on the oldest settlement in Aiken County, Savanna (Savanno) Town which began in 1685. It begins with the Paleo Indians, 11,000 years ago. The history includes the Westos and Savanna Indians, Chickasaw Nation, New Windsor Township, Swiss settlers and a ferry that operated for 185 years, from 1739 until 1924. Here, you can learn of the British occupation of George Galphin’s plantation house (trading center), and of Silver Bluff Missionary Baptist Church (1750) - the 1st black Baptist church in America. Hours: Tu., W. 11 a -11:30 a.

“The Godfather of Soul” James Brown

Born in Barnwell, SC and raised by an aunt in Augusta, GA., the late James Brown chose Beech Island to be his home many years ago. Brown made his first Top 10 pop single in 1965 with “Papa’s Got A Brand New Bag”. His innovation has had a profound influence on popular music styles around the world, including funk, rock, Afro-pop, disco and rap. A charter member of the Rock and Roll Hall of Fame, Brown added to his collection of accolades when he received a special lifetime achievement Grammy Award in



Carolina Dragway

302 Dragstrip Rd., Jackson, 803-471-2285 or 803-266-5831.

The venue is sanctioned by the International Hot Rod Association and is one of two 1/4 mile dragstrips in South Carolina. Built in 1957 and renovated 1986, it has a three story control tower, six staging lanes. Overnight parking / no hookups. Restrooms, concessions, gift shop playground and bleachers (seating 6000) and Family Section (no alcohol allowed). Under 12, admitted free. Thurs. evenings 7-10 & Saturdays, 7-11.

www.carolinadragway.com



Redcliffe Plantation State Historic Site

181 Redcliffe Rd., Beech Island, 803-827-1473. Redcliffe was the home of South Carolina Governor James Henry Hammond and three generations of his descendants.

Together, Redcliffe and the Hammonds weathered war, political upheaval and economic calamity. In 1935, James Henry Hammond’s great-grandson, John Shaw Billings, began restoring the mansion to its 19th-century grandeur. Billings, once the editor of Time, Life, and Fortune magazines, donated the estate and its collections in 1973 to the people of South Carolina. The gift ensured that his family’s beloved homeplace would be preserved. It is listed on the National Register of Historic Places. There are two original slave cabins on site. Grounds are open Thurs.-Mon., 9am-6pm. House tours: Thurs.-Mon., 1pm-3pm, small fee. www.discoversouthcarolina.com/stateparks



Silver Bluff Audubon Center & Sanctuary

4542 Silver Bluff Rd, Jackson, 803-471-0291 or 803-827-0781. Silver Bluff is a 3,154 acre wildlife sanctuary owned by the National Audubon Society. The site boasts a varied habitat of forests, fields, lakes, ponds and streams, nestled along 2.4 miles of the Savannah River. Habitat and wildlife diversity make Silver Bluff a favorite destination for those interested in birds (over 200 species on checklist), wildflowers, photography, or simply a quiet walk. Education focuses on forest and land management and is targeted toward school groups and the general public. No fee, though donations are accepted.

www.augustaikenaudubon.org

Savannah River Archaeological Research

SC State Government Offices, Beech Island, 803-725-3623. Two archaeological studies by the South Carolina Institute of Archaeology and Anthropology succeeded in locating Galphin's post and nearby Native American encampments. 140 acres surrounding the site have been placed on the National Register of Historic Places. www.srap.org

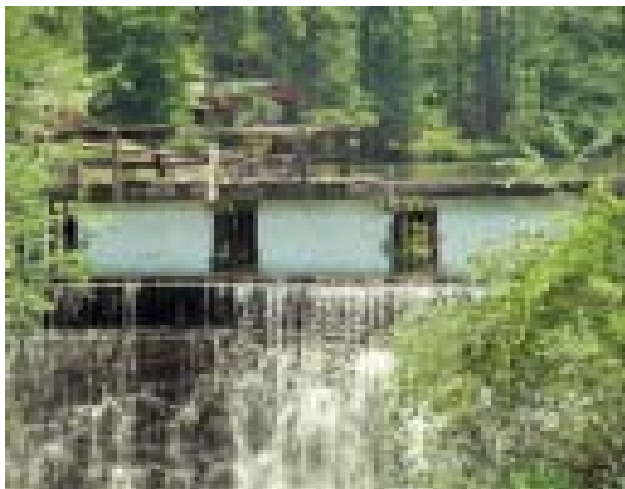
Valentine Sagefield's B & B, Vineyards

Silverton St., Jackson, 888-471-9809 or 803-471-9809.

Valentine Sagefield is the ultimate experience in comfort and relaxation. Located minutes from Aiken and Augusta, come and enjoy the beautiful surroundings and true Southern Hospitality. Valentine Sagefield Vineyards is a full service winery with a tasting room and gift shoppe. Come and enjoy the very best American hybrid, Muscadine and fruit wines. www.valentinesagefieldvineyards.com



Graniteville & The Horse Creek Valley



Graniteville Mill & The Blue Row

In 1845 the original Graniteville Mill was the 1st cotton mill in the South and it survived Sherman's March. Buildings were constructed of blue granite, which gave the town its name. Examples of the Blue Row Homes, originally painted with a light blue wash, can still be found in town. Mr. J.W. Reardon, known as "The Grand Ole Man" holds the world record for the longest continuous employment in one company. His record is 87 years!

Graniteville Cemetery

Gregg Hwy., Graniteville. High on top of a hill overlooking the village, founder, William Gregg, dedicated this land for burials. Gregg was originally buried in the cemetery, but his wife had his body moved to Magnolia Cemetery in Charleston, SC. His marker was returned and rests at the original gravesite. The older wooden markers have been lost to time. Oldest stone: 1852.

Horse Creek Valley Veterans Park

US Hwy. 421, Bath. The park has paved walkways, night lighting, granite benches, picnic tables and a gazebo. The focus is the circle of honor inscribed with 900 veterans' names from World War I to the present of the Midland Valley area



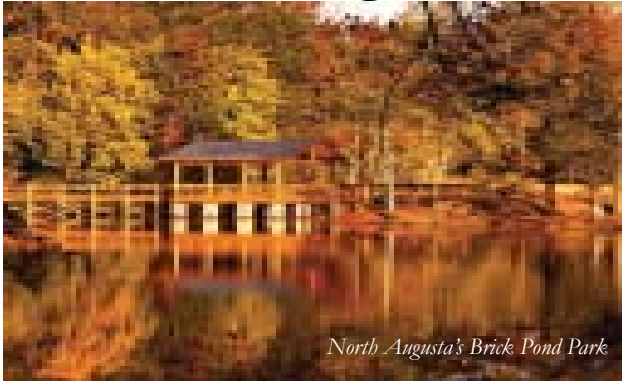
Langley Pond

US Hwy. 1 at Langley Dam Rd. During the 1860's, the pond was known as Horse Creek Pond. A dam was built to generate electricity for the Langley Cotton Mill around 1870 and the local people began referring to it as Langley Pond. During that time, there was a total of six mill villages existing along Horse Creek. The Best Friend Railroad ran along the west shore and a trestle crossed the water onto the east shore. All tracks are now located on the east shore and the trestle was never replaced after an earthquake demolished it on Aug. 31, 1886.

Today, Langley Pond operates as the only Olympic size rowing course in South Carolina with six fully buoyed lanes. It is perfect for competition and training. Several great hotels are located nearby and the on-site bathhouse make spring-break training camps and practices extremely convenient. The concession stand, boat ramp, special events area, swim area, dock, office and picnic shelter complete the package. To arrange your next spring-break camp, regatta or water sports event, call 803-642-7559.



North Augusta



North Augusta's Brick Pond Park

North Augusta rests along the Savannah River and is filled with antebellum homes lining downtown streets and grandiose homes along the riverfront. Two towns, Campbell Town (1770) and Hamburg (1827) preceeded the present town. James Jackson purchased more than 5,000 acres for \$100,000 in 1890 to develop North Augusta. In 1902, he added the flamboyant resort, Hampton Terrace Hotel that burned in 1916. The town flourishes today with parks, trails, recreational facilities, homes, riverfront communities and commerce.



Arts and Heritage Center of North Augusta

100 Georgia Ave. 803-441-4380. The Arts and Heritage Center of North Augusta (AHCNA) is a 7,500 sq.ft. facility located inside the North Augusta municipal center. The AHCNA is dedicated to the exhibition of regional arts and history with exhibits rotating every three months. The Gift Shop showcases local, handmade crafts. www.artsandheritagecenter.com

Boeckh Park

Front Street, 803-441-4300. This city facility has a covered open air pavilion located along the riverfront extension of the Greenway Trail. Open fire pit and limited bench seating, rental.

Brick Pond Park & The Greenway

Riverside Blvd. at 13th St. Bridge. This 30- acre wetland and wildlife habitat is the first of its kind in SC in a downtown location, along the Savannah River and its shoals. The ponds were a former industrial site where bricks and pottery were made. It is a healing ecosystem today and is connected to the Greenway

Trail, a 10 mile paved trail created from an abandoned railway line. Brick Pond Park features a crushed brick trail & boardwalks throughout and is home to turtles, small alligators, deer & many bird species.



Hippodrome

US Hwy. 1, 5 miles from I-20 / Exit 1, 706-823-3325.

Open-air equestrian arena and stables on 32 acres provide more than 30 equine events, such as barrel racing, team penning, cutting horse competitions, horse shows and rodeo.

Riverview Park and Activity Center

100 Riverview Dr., 803-441-4300. The 150 acre park has a paved 1 mile walking/jogging track around a baseball and softball complex, a tennis complex with 7 regulation size courts, 2 playgrounds, batting cages and a covered picnic pavilion, which can be rented. The park also includes soccer fields and an 18-hole disc golf course. Greenway Trail connection, parking.

The 94,000 sq. ft. Activity Center has 4 gymnasiums, 2 racquetball courts, a suspended indoor walking/jogging track, exercise room, and game room. The center is available to residents and visitors for a nominal annual fee. Each July, the Nike Peach Jam is held at the center, hosting the top AAU Basketball teams in the nation.



Living History Park

299 W. Spring Grove Ave., 803-279-7560. The park is the setting for concerts, picnics, recreation, weddings, community events, historical demonstrations, a two-day living history encampment, and an artisan's fair. The reenactment, "A Day to Remember," is a demonstration of life in the 1700's and is on the 3rd weekend each October. An Artisan Fair takes place each April. The park is open 7 days a week, 365 days a year and is a SC National Heritage Corridor Site. www.colonialtimes.us



Photo by Larry Gleason

The Garden At North Augusta

299 W. Spring Grove Ave., 803-279-7560. The Garden is designed to be an all-inclusive, botanical retreat. It features wheelchair accessible pathways and special features for the visually impaired (including a drinking fountain for seeing eye dogs!). Sight, sound, smell and touch ~ a garden designed to delight all senses. www.colonialtimes.us



North Augusta Fishing Piers

The North Augusta Landing, at Riverview Park, provides easy access to the Savannah River. Primitive campsites available with reservations. 2 fishing piers and picnic area make this a great day for anyone. Hammonds Ferry Rd. 803-441-4300

1st Schoolhouse

\$300 was raised in 1898 to build a school at 415 West Ave. A new school was built in 1901 on Georgia Avenue. The original school has been renovated into an antique shop and home.

Rosemary Hall & Lookaway Hall

804 Carolina Ave., In 1902, James U. Jackson, founder of North Augusta, built magnificent Rosemary Hall. The English staircase and the hand picked pine used for paneling and ceilings are outstanding features. Jackson searched 30 carloads of lumber to find just the right "curl" for the effects he wanted. Across the street at Forest & Georgia Ave., Jackson's brother, Walter, built his home in 1895. Lookaway Hall, with a beautiful panoramic view, is popular Inn. Both are listed on the National Register. 803-522-0079

Water Works Park

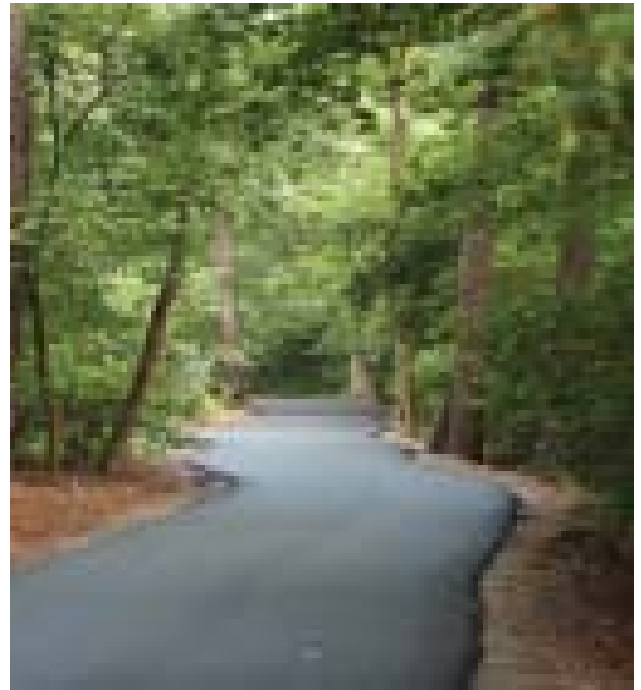
This park is located near the Riverside Boulevard entrance to the Greenway. It currently features a picnic shelter donated by the North Augusta Sertoma Club. Reserve the picnic shelter by calling 803-441-4300

The Star Of Edgefield

This plantation house at 111 Butler Ave., built by Robert Butler prior to the Civil War, replaced an earlier home that burned. To avoid another catastrophe, Butler used hand-made bricks, 2.5' thick, to construct the walls. The cupola view stretched to the Savannah River. The iron work for the porch was shipped from England through the Union blockade of Charleston.

Lions Memorial Field

N.A. Lions Club leased the property from the city in 1950, developed and operated it for 29 years. It reverted back to the city in 1979. In 2000, a \$1.4 million dollar face-lift took place including grandstands, concessions, restrooms, playground and practice fields. Rental: 803-441-4301.



Greenway National Recreation Trail

803-441-4310 (Entrance with parking at Pisgah Rd., Martintown Rd., or Riverside Blvd.) An abandoned railroad right of way has been transformed into a National Recreation Trail. The 8 mile paved trail meanders across the natural terrain and along the Savannah River. Walk, bike, or roller-blade under a comfortable canopy of trees. Deer or songbirds may greet you along the way.

Wade Hampton Veterans Park

300 Block of Georgia Ave. The park is dedicated in memory of Civil War General Wade Hampton. Monuments are placed in the formation of the American Flag and dedicated to veterans of

Rural Areas

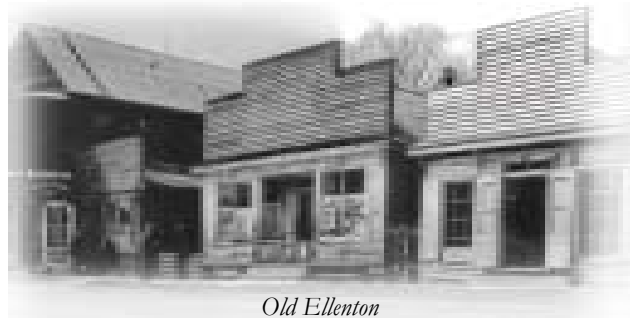


Couchton

The name of the community came from Mr. Walter Couch, a housing developer of the early 1950's. The area is located on Hwy. 302 and was the site of the Civil War Prison Camp Butler.

Eureka

First known as Seigler's Crossing. In 1910, Marie Cromer, began the Girl's Tomato Club because females were not allowed in the Boy's Corn Club. Starting with 46 members, the Girl's Tomato Club grew to 25,000 members nationwide in less than two years. Today, the club is known as the 4-H Club.



Old Ellenton

New Ellenton

The people of Ellenton learned in the early 1950's that their town would be displaced by the US Government. 200,000 acres of land was purchased for \$19 million in Aiken and Barnwell Counties for a massive nuclear weapons complex. The site generated nuclear components for the hydrogen bomb. The "Atomic City Festival" is held in remembrance of the 6000 people who were displaced. A documentary is available at the Aiken

County Visitor Center.

Perry

Established on land owned by John Martin Salley. Benjamin Perry was a friend of Salley's who served as Provisional Governor for six months during the Civil War. He and John Wagener were both instrumental in bringing the railroad through Perry. The town, once named Wagener, changed names to Perry in 1888 when present-day Wa-



Montmorenci



James Achille de Caradueuc surveyed the railroad route while Cyril Pascalis and Andrew Dexter designed the nearby city streets of Aiken. Pascalis built a home for his mother and sisters' children at Johnson's Turnout in 1832. The home was Union headquarters during the Battle of Aiken.

By 1853, James Achille de Caradueuc owned over 800 acres in "Conway's Valley". He renamed the estate "Vale on Mont Morency", as it reminded him of the French countryside where he lived after his parents' death. He produced wine for years in the area of Polecat Pond. The Civil War claimed his two sons and he gave up the wine business. He became engineer-in-chief and land agent for the South Carolina Railroad until his death in 1895.

Montmorenci Vineyards

2989 Charleston Hwy. (US 78) Montmorenci. 803-649-4870. This family-owned business began when the young son of an ex-Gulf chemist, turned peanut/cotton farmer began experimenting with his grandfathers' muscadines. Located four miles east of Aiken, it is a hot tourist destination, boasting many prestigious awards. 20,000 bottles of wine are produced annually. Grapes are grown in the local vineyard without the use of machinery. The gift shop is filled with unique gifts. Vineyards and giftshop are open Saturdays from 10 am -6m, please call



Annie's Inn is rumored to be home of an apparition of a girl that calls out to her mother on occasion. It also served as a hideout for Confederate soldiers during the Civil War.

Monetta



The Ancient Southern Cherokee Path

Monetta is divided between Saluda and Aiken Counties. During the 1920's and 30's, it was the asparagus center of the world. Today, peach trees encompass the landscape. The town is located at the junction of the ancient Cherokee Path and the Occaneechi Trail. It is believed that Monetta, the daughter of an Indian Chief, is rumored to be buried in the center of town.

The Ancient Cherokee Path

& The Occaneechi Trail (Virginia Path)

Native Americans followed trails created by pack animals, since they often led to food and water. The Cherokee Path is one that ran along Saluda River from Keowee, SC to Columbia, SC.

It continues along the Santee River in the Low Country. In Monetta, Old Ninety Six or Indian Trail (Hwy. 39) is a branch of this ancient path. It also crosses the Occaneechi Trail or Virginia Path in Monetta. The trail connected the Silver Bluff area at the Savannah River to the James River in Virginia. DeSoto also followed this path in 1540.



“THE BIG MO” Drive-In Theater

5822 Columbia Hwy. N, Monetta 803-685-7949.

The theatre opened in 1951 and survived 35 years but closed in 1986. The re-opening in 1999 revived the unique tradition of one of America's lost forms of entertainment.

The Big Mo is the only Drive-In operating in South Carolina! In 2005, a second screen was added. Visit the website for current features. www.thebigmo.com

Salley

Three Swiss German families settled here on land grants from King George II in 1735. The head of each family was named “John”, so, the settlement became “John Town.” The Battle of Dean’s Bridge (Revolutionary War) took place here in 1787. Seventeen Tories were buried in an unmarked grave. Tragedy struck during the Civil War as Sherman’s troops burnt many mansions. Organized churches were: (1802) Dean Swamp, (1812) Rocky Grove, (1876) Sardis and (1888) Salley Baptist. Dempsey Salley was a member of the SC Legislature and helped bring the railroad to Salley and is credited with the incorporation. “John Town” became “Sally” on December 19, 1887. The spelling changed in 1935.



Salley Historic District

Bound by Pine, Ferguson, Poplar and Aldrich Streets, the district consists of 60 properties. The homes in the area are Victorian and Art Deco. The town began in 1887, as a result of the railroad, and flourished until the 1930's. After the 1930's, Salley experienced a period of decline. However, the homes in this district have remained unchanged since the 1930's. The Salley Historic District is listed on the National Register of Historic Places. 803-258-3485.

Salley Old School Museum

218 Pine St. is open by appointment only. Memorabilia of the Salley family (1735) and the Sardis Baptist Church black history (1950) are featured. 803-258-3306

Battle of John Town Memorial

The memorial is 2 miles west of Salley. On May 4, 1782, Patriots fought to defend two bull pens where British and Tories were imprisoned during the Revolutionary War.

Eudora Farms

219 Salem Lane. Tours by appointment. Special event tour during the last 2 weekends of Oct. and the 3rd weekend in Dec.

Visit online: www.eudorafarms.com
or call 803-564-3305.

Hemrick House

124 Pine Street. The first home built after Sherman's Civil War destruction of John Town. (Circa 1867)

Wagener

Wagener was known as Pinder Town and later as Gunter's Cross Roads (Guntersville), after a large number of North Carolinian settlers named "Gunter". The men helped make up Co. I of the 20th SC Infantry, which was part of Kershaw's Brigade during the Civil War. The town was renamed after George Wagener, a railroad activist and cotton merchant.

Wagener Museum

12 Short St., 803-564-3412 or 803-564-3507. The Wagener Museum is a featured stop on the South Carolina National Heritage Corridor and displays artifacts and documents telling of the life and times of community residents since the coming of the railroad in 1887. Journey back in time to the era of the family farm and "The Swamp Rabbit" train.

Museum Hours: Friday, 8 am - 5 pm,
Saturday, 10 am - 2 pm and Sunday, 2 pm - 5 pm

Wagon House

803-564-3412. A Conestoga Wagon was given to the town by the State of South Carolina. Viewed by appointment only.

White Pond & Windsor

New Windsor consisted of 11 townships set up in South Carolina by Royal Gov. Johnson in the 1730's. It incorporated all of present day Aiken County. Named after Windsor Castle, a home of the British Monarchy, the town of Windsor was established in the 1700's. Windsor flourished until the financial bank collapsed in 1929 during the depression.

Aiken State Natural Area

803-649-2857, 1145 State Park Rd, Windsor. The park is a combination of a river swamp, bottomland hardwood forest and dry sandhill pine forest; the latter provides evidence of an era when the sea reached this far inland. Built in the 1930's by the Civilian Conservation Corps, this 1,067-acre park has a variety of animal and plant life. Offering: canoeing the Edisto River, fishing, picnicking, camping, hiking and canoe trails. Campsites for RV's and tents, some primitive sites available. Canoe rentals.



South Carolina State Parks

South Carolina has designated many wonderful natural, cultural and recreational resources as state parks, natural areas or historic sites. Over 40 properties from the Blue Ridge to the Atlantic protect and preserve the rich heritage of the Palmetto State. Reservations for campsites, lodging, picnic shelter and meeting facilities: 1-866-345-PARK or online at www.SouthCarolinaParks.com.

Aiken State Natural Area

803-649-2857

1145 State Park Rd, Windsor, SC. Sixteen miles E of Aiken off US 78. Four spring-fed lakes and the meandering South Edisto River make this a popular destination. It is a combination of a river swamp, bottomland hardwood forest and dry sandhill pine forest; the latter provides evidence of an era when the sea reached this far inland. Built in the 1930's by the Civilian Conservation Corps, this 1,067-acre park has a variety of animal and plant life. The park also offers a variety of outdoor recreation opportunities such as canoeing the Edisto River, fishing, picnicking, camping and hiking. Campsites accommodate RV's and tents. There are also primitive sites. Canoe and boat rentals.

Redcliffe Plantation State Historic Site

803-827-1473

181 Redcliffe Rd, Beech Island, SC. Three miles SE of Beech Island off US 278. The Greek-Revival mansion, completed in 1859, was originally the home of Governor James Henry Hammond and three generations of his descendants. Hammond's political career included terms as a United States congressman, governor of South Carolina, and United States senator, was best known as an outspoken defender of slavery and states' rights. Hammond coined the phrase that "Cotton is King" in an 1858 speech to the Senate. A successful cotton planter, he designed Redcliffe to be an estate for relaxation, entertaining and agricultural experimentation. Facilities include the historic home, nature trail and pond. Fishing and home tours.

South Carolina Welcome Centers

Blacksburg, I-85 @SC/NC Border	864-839-6742
Fair Play, I-85 @ 100 Welcome Center Place	864-972-3731
Fort Mill, I-77 North	803-548-2880
Hamer, I-95 @ SC/NC Border	843-774-4711
Hardeeville, I-95 @ SC/GA Border	843-784-3275
Landrum, I-26, Eastbound	864-457-2228
Little River, US 17 @ SC/NC Border	843-249-1111
North Augusta, I-20 SC/GA Border	803-279-6756
Santee, I-95	803-854-2442

South Carolina National Heritage Corridor

The South Carolina National Heritage Corridor extends 240 miles from the mountains of Oconee County down along the Savannah River to the port city of Charleston. The Corridor was established by the US Congress in 1996 as one of a select number of National Heritage Areas. Divided into four distinct regions, the Corridor provides a cross-section of the landscape, history and culture of South Carolina. Aiken County is situated in Region 3, the Rivers, Rails and Crossroads Region, of the South Carolina National Heritage Corridor. This region was strongly influenced by the Charleston to Hamburg Railway, the first commercial railway in America and the longest commercial railway in the world at that time. Small towns sprang up along the track, taking advantage of access to the surrounding plantations and farms. The region is rich in agricultural heritage and features a variety of crops and farms. Cotton, corn, soy beans and peaches are just a few of the crops that can be seen. The Edisto, Savannah, Salkehatchie and Santee rivers tie the region together. These rivers, along with other natural resources, offer an outstanding educational, recreational and nature-based tourism opportunity in the region.
www.sc-heritagecorridor.org

Hotels & Motels

 Aiken  North Augusta  Other Areas

American Hearth Inn

803-642-5828

3935 Richland Ave W, Aiken. 34 rooms.

Ashley Motel

803-

593-9138

4875 Jefferson Davis Hwy., Clearwater, 16 rooms.

Country Inn & Suites

803-649-4024

3270 Whiskey Rd, Aiken. 100 non-smoking rooms, outdoor pool, continental breakfast, spa, fitness facilities, cable, microwave, fridge, coffee maker, guest laundry. www.country-inns.com

Days Inn

803-642-5692 or 800-329-7466

I-20 Exit 22, 2654 Columbia Hwy, Aiken. 78 rooms. Continental breakfast, high speed internet access, pool, refrigerator, microwave. www.daysinn.com

Days Inn Downtown

803-649-5524 / 800-329-7466

1204 Richland Ave W, Aiken. 42 rooms. Continental breakfast, high-speed internet access, refrigerator, microwave and pool. www.daysinn.com

Deluxe Inn

803-642-

2840

I-20 Exit 19, 1919 Edgefield Hwy, Aiken. 34 rooms. Continental breakfast.

Deluxe Inn

803-278-0355

610 Martintown Rd E, North Augusta, 21 rooms.

Donna's Lodging

803-644-5275

199 University Pkwy, Aiken. Near USC-Aiken. 4 efficiencies and a two bedroom apt. Refrigerator, microwave and coffee maker. Long term stay.

Econo Lodge

803-649-3968 or 800-528-1234

3560 Richland Ave W, Aiken. 60 rooms. Continental breakfast, indoor pool, microwave, refrigerator, iron, hair dryer. www.choicehotels.com

Fairfield Inn & Suites

803-648-7808 or 800-Marriott

185 Colony Pkwy, Aiken. 84 rooms. Cont. breakfast, indoor pool and jacuzzi, coffee maker, hair dryer, iron, internet, interior corridors. www.marriott.com

The Guest House at Houndslake

800-735-4587

897 Houndslake Dr, Aiken. 34-room lodge. Continental breakfast, free wireless internet. Hotel guests may use club's facilities. 803-648-9535 www.houndslakeguesthouse.com

Guesthouse International Inn

803-502-

0000

I-20, Exit 18, 110 Frontage Rd, Aiken. 140 rooms. Microwave, refrigerator, iron. www.guesthouseintl.com

Hampton Inn

803-648-2525

100 Tamil Drive at Whiskey Rd S, Aiken, 67 rooms. Cont. breakfast, pool, internet access, microwave, refrigerator, interior corridors. www.hilton.com

Hilton Garden Inn

803-641-4220

350 Eastgate Dr., Aiken. 92 rooms, swimming pool, fitness and business center, high speed, wireless internet, meeting room, on site dining. www.hiltongardeninn.com

Holiday Inn Express

803-648-

0999

155 Colony Pkwy, Aiken. 99 rooms. Cont. breakfast, pool, whirlpool, internet, guest laundry, exercise facility. www.hiexpress.com/aikensc

Hotel Aiken

803-648-

4265

235 Richland Ave. W, Aiken. 70 rooms. Full breakfast, internet, lounge, restaurant. www.hotelaiken.com

Howard Johnson

803-649-5000

1936 Whiskey Rd S, Aiken. 63 rooms. Cont. breakfast, pool. Pet friendly.

Knights Inn

803-648-6821

1850 Richland Ave W, Aiken. 74 rooms. Cont. breakfast, pool. Pet friendly.

North Augusta Motel

803-279-2652

303 Georgia Ave, North Augusta. 13 rooms.

Quality Inn

803-502-

0900

I-20, exit 22, 110 E Frontage Rd, Aiken. 60 rooms. Continental breakfast, high speed internet and pool. www.choicehotels.com

Quality Inn

26

803-641-1100

Bed & Breakfasts

Annie's Inn

803-649-6836

5 miles E of Aiken on US 78, Montmorenci. Antebellum farmhouse and six guest cottages. Full complimentary breakfast and newlywed packages. Corporate or long term stay. Catering to the equestrian crowd for over 20 years. www.anniesinnbnb.com

Arbor House

803-292-6971

203 Arbor Terrace, Aiken. Historic downtown location. Private & gated. Upstairs apartment offers 2 queen bedrooms, 2 baths, queen sleeper, full kitchen, living/dining room with fireplace. Cable, internet, washer/dryer, garage parking. Maid service and continental breakfast.

The Briar Patch

803-649-2010

544 Magnolia Lane SE, Aiken. This two-story house is entered through a gravel courtyard. The two guest bedrooms with private entrances and baths. Listed on the National Register.

Carolina Oaks Bed and Breakfast

803-

278-6360

819 Carolina Ave., North Augusta. One room or entire house may be reserved. 3 guest rooms, w/wth 2 shared baths upstairs. Queen beds. home cooked breakfast. Hospital-ity center, wireless internet, office services, event and meeting facility. Catering service. No pets, children welcome with adult supervision. Vacation packages available. www.carolinaoaksbb.com

Carriage House Inn, c. 1872

803-644-5888

139 Laurens St NW, Aiken. Located in historic downtown. 16 rooms with private baths/whirlpools. Full breakfast, HBO and wireless high speed internet. Listed as one of the 129 Hotels we Love by the National Geographic Traveler in 2009. www.aikencarriagehouse.com

Claridge House, c. 1897

803-564-8777/803-564-

5687

162 Lee St N, Wagener. Victorian style home. One room with a private bath and three rooms share hall bath. Full breakfast. www.claridgehousebb.com

General Elliott Inn

888-642-8108

939 New Bridge Road, Aiken. Queen Anne style home on 3 acres. 3 guest rooms and 2 bedroom cottage. Gourmet breakfast, snacks and wine served in late afternoon. Children and pets welcome in cottage. Lunch and dinner available by reservation. www.generalel-lottinn.com

Rose Hill

803-648-1181

221 Greenville St NW, Aiken. Historic Downtown Winter Colony garden estate encompassing an entire downtown city block. Welcome beverage, maid service, continental breakfast, bar and clubroom. Overnight/long term. Rooms w/ private baths or group accommodations for up to 21. www.rosehillstate.com

Rosemary Hall & Lookaway Hall

803-522-0079

804 Carolina Ave and 103 W Forest Ave, North Augusta. Both are on the National Register of Historic Places. Lookaway Hall, c.1895, has 14 rooms. Rosemary Hall, c. 1902 has 7 rooms. Meeting baths, period antiques, custom-made carpets, fine art and reproductions. Meeting facilities.

Town & Country Inn

803-642-0270

2340 Sizemore Circle, Aiken. 5 rooms. Pool. 11 stall barn and pasture for equestrian travelers. Just 4 miles from downtown. Pet friendly. www.towncountrybb.com

Valentine Sagefield

803-471-9809

1185 N Silverton St, Jackson. Jeffersonian antebellum house. Vineyards, tasting room, full breakfast and dog kennels. 3 bedroom suite, a king size room, both with private bath. www.

Camping

Aiken State Natural Area

803-649-2857

1145 State Park Rd, Windsor. 25 campsites. Packed sand, water and electric, fire ring, picnic table, heated restroom. RV's up to 35 ft. and primitive camping w/ picnic tables, fire rings and outhouse for organized groups. Nature trail, canoe trail, birding, hiking, fishing, boating, shelters.

Aiken RV Park

803-648-4056

2424 Columbia Hwy N, Aiken. Full-service RV park. Day, week, or monthly. Full hookups; 30 & 50 amps, level concrete runners, LP gas, washerette, hot ceramic showers, free ice, cable TV.

Crossroads Mobile Home Community

803-642-5702

569 Crossroads Park Dr, Aiken. Exclusive RV section with large lots, landscaping, paved streets and parking, street lights and patios w/ accent lights. Pets welcome with some restrictions.

North Augusta's Riverview Landing

803-441-4310

Paved landing at Hammonds Ferry Rd., Riverview Park. Limited primitive site, Reservations required.

Pine Acres Campground

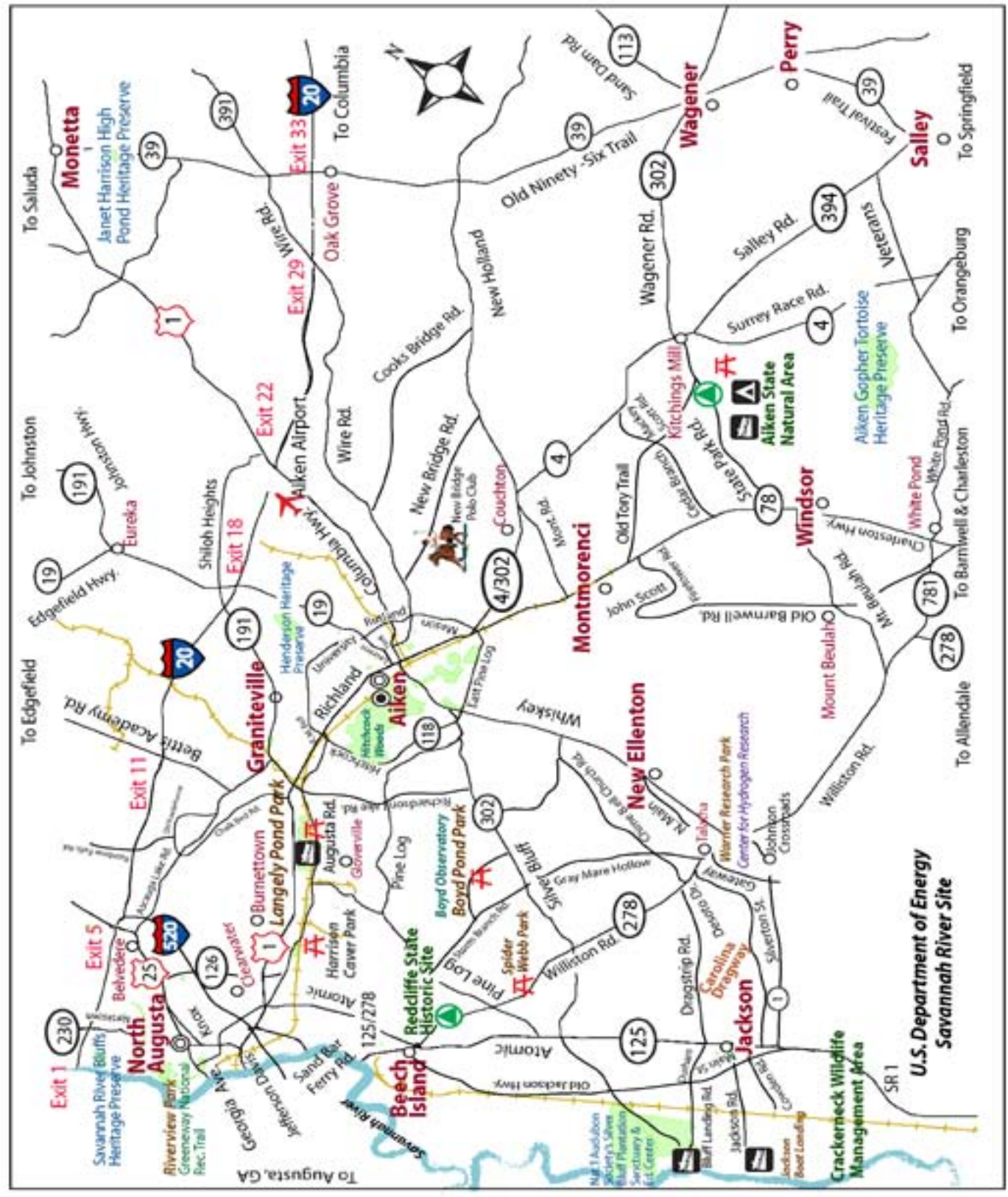
803-648-5715 or 888-648-5715

205 Duke Dr (corner Duke Dr & Columbia Hwy N), Aiken. RV campgrounds. Weekly camper rentals. Rental trailer parks. www.ritewayestate.com

Rose Chase RV Park

803-644-9800

3041 Wire Rd, Aiken. In-park rentals, U-store it, equine sites w/ corrals. Horse riding & jog-



**U.S. Department of Energy
Savannah River Site**

**Crackerneck Wildlife
Management Area**

Jackson

New Ellenton

Montmorenci

Windsor

Wagener

Salley

Perry

To Augusta, GA

To Saluda

To Johnston

To Edgefield

To Springfield

To Orangeburg

To Barnwell & Charleston

To Allendale

To Savannah

To Columbia

To Aiken

To Edgefield

To Johnston

To Edgefield

To Saluda

To Johnston

To Edgefield

To Johnston

To Edgefield

To Johnston

To Edgefield

To Johnston

To Edgefield

To Johnston

To Edgefield

To Johnston

To Edgefield

To Johnston

To Edgefield

To Johnston

To Edgefield

To Johnston

To Edgefield

To Johnston

To Edgefield

To Johnston

To Edgefield

To Johnston

To Edgefield

To Johnston

To Edgefield

To Johnston

To Edgefield

To Johnston

To Edgefield

To Johnston

To Edgefield

To Johnston

To Edgefield

To Johnston

To Edgefield

To Johnston

To Edgefield

To Johnston

To Edgefield

To Johnston

To Edgefield

To Johnston

To Edgefield

To Johnston

To Edgefield

To Johnston

To Edgefield

To Johnston

To Edgefield

To Johnston

To Edgefield

To Johnston

To Edgefield

To Johnston

To Edgefield

To Johnston

To Edgefield

To Johnston

To Edgefield

To Johnston

To Edgefield

To Johnston

To Edgefield

To Johnston

To Edgefield

To Johnston

To Edgefield

To Johnston

To Edgefield

To Johnston

To Edgefield

To Johnston

To Edgefield

To Johnston

To Edgefield

To Johnston

To Edgefield

To Johnston

To Edgefield

To Johnston

To Edgefield

To Johnston

To Edgefield

To Johnston

To Edgefield

To Johnston

To Edgefield

To Johnston

To Edgefield

To Johnston

To Edgefield

To Johnston

To Edgefield

To Johnston

To Edgefield

To Johnston

To Edgefield

To Johnston

To Edgefield

To Johnston

To Edgefield

To Johnston

To Edgefield

To Johnston

To Edgefield

To Johnston

To Edgefield

To Johnston

To Edgefield

To Johnston

To Edgefield

To Johnston

To Edgefield

To Johnston

To Edgefield

To Johnston

To Edgefield

To Johnston

To Edgefield

To Johnston

To Edgefield

To Johnston

To Edgefield

To Johnston

To Edgefield

To Johnston

To Edgefield

To Johnston

To Edgefield

To Johnston

To Edgefield

To Johnston

To Edgefield

To Johnston

To Edgefield

To Johnston

To Edgefield

To Johnston

To Edgefield

To Johnston

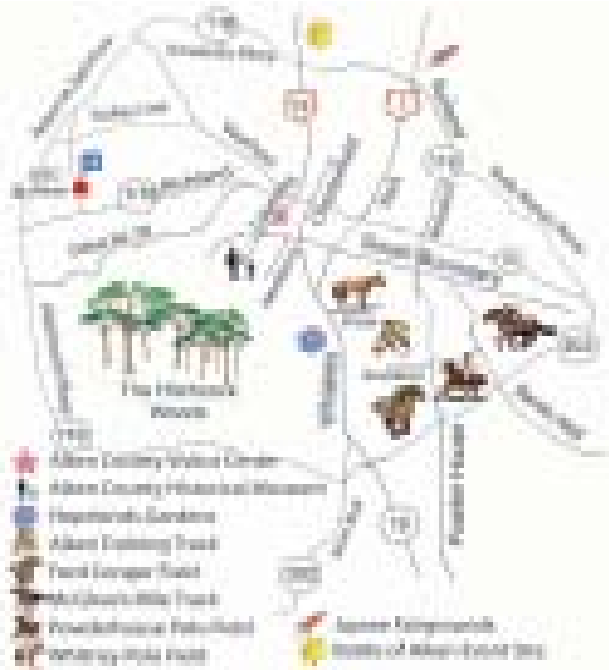
To Edgefield

To Johnston

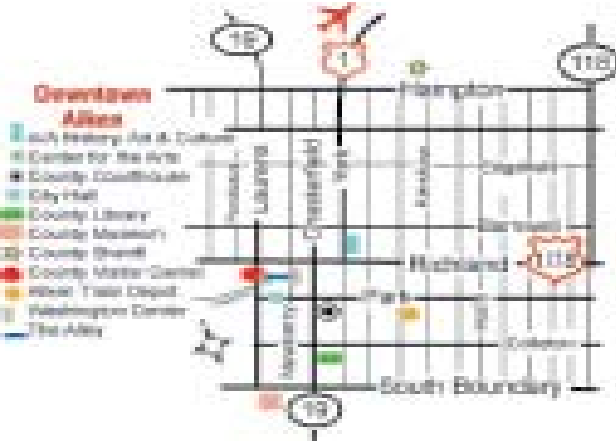
To Edgefield

To Johnston

Aiken & SC Welcome Centers



North Augusta & State Parks



S.C. Welcome Centers





Carriage Drive / Tours

Aiken Carriage Drives, 706-373-6350

532 Glenwood Dr., Aiken, SC 29801. Can accommodate up to 12 people. Reservations are preferred one week in advance, but not required.

Aiken County Historical Museum Tour, 803-642-2015

Guided tours of the museum and grounds by appointment.
433 Newberry St SW, Aiken 29801.

Aiken Ghost Tour, 803-270-3683

90 minute guided walk in the Downtown area by appointment. cubbage@bellsouth.net

Aiken Tours, 803-642-7631

Departing Saturdays from the Washington Center for the Performing Arts at 124 Newberry St, Aiken. Reservations requested by Thursday prior. City of Aiken Parks, Recreation & Tourism, www.cityofaikensc.gov

Beech Island Historical Society, 803-867-3600

144 Old Jackson Hwy. Beech Island, 29842

Jackie Bartley www.beech-islandhistory.org

Historical Rose Hill Estate, 803-648-1181

One hour tours of this preserved garden estate by appointment.

221 Greenville St NW, Aiken, 29801 www.rosehillestate.com

Savannah River Charters, Cruises & Tours

1-800-750-7287 or 803-202-1009

5469 Jefferson Davis Hwy., North Augusta, 29841

www.savannahrivercharters.net

Equestrian Facilities

Almost Heaven Stables 803-663-3001

220 Golf Course Rd, Warrentonville. Focusing on total horse care. Lessons, trail rides, boarding, horse camps, and birthday parties. Facilities include trails, covered picnic shelters and a game area. Call for reservations.

Ashbrooke Equestrian Center

803-649-0505

5020 White Pond Rd, Aiken. Riding instructions for adults and children. www.equitation.com

Black Forest Equestrian Center

803-644-6644

4343 Banks Mill Rd, Aiken. Facility was built in old European architectural style. Facilities include a covered riding arena, 3 outdoor arenas, 12 miles of trails and 2 stables. Riding lessons, and boarding. By appointment only. www.blackforestfarm.com

Chasin' Farm 803-648-6277

735 Anderson Pond Rd, Aiken. Situated on 80 acres. Facilities include covered riding arena, dressage, jumping, turnout and training. Riding lessons and boarding available. By appointment only.

Devonwood Farms 32 803-502-1000

233 Woodward Dr, Aiken. Beginner to advanced riding instruction. Adults and children. English and Western. Horse training, sales and showing. www.devonwoodfarms.com

The Hippodrome 706-823-3325

US 1, 5 miles from I-20, exit 1 in North Augusta. The Hippodrome includes an open air equestrian arena and stables situated on 32 acres. More than 30 equine events are scheduled throughout the year. Events include barrel horse racing, team penning, cutting horse competitions and open benefit horse shows. The facility also hosts other events throughout the year. www.northaugustahippodrome.com

Jumping Branch Farm 803-642-3484

179 Fox Pond Rd, Aiken. Julie Zapapas. Riding lessons, and training. Visitors welcome by appointment. www.jbfarm.com

Turnabout Farms 803-593-8000

142 Dalmatian Dr, Aiken. Located just off Herndon Dairy Rd. The farm offers full paddock and boarding. Dressage and fenced arenas.



Photo by Larry Gleason

Fox Hunts

Aiken Hounds 803-643-DRAG

Established in 1914. Opening Meet and Blessing of the Hounds held Thanksgiving Day in Hitchcock Woods at 11 am. Regular hunts held Tuesday at 2 pm and Saturday at 9 am. Also sponsors the Aiken Horse Show and various other activities. www.aikenhounds.com

Whiskey Road Fox Hounds 803-649-0638

520 Hitchcock Rd, Aiken. Cubhunting begins in Oct. Formal season begins with Opening Meet in Nov. Scheduled fox hunts on Thursday and Sunday mornings. www.whiskeyroadfoxhounds.com

Polo Clubs & Information

- 302 Polo** 803-642-8780
491 Burkelo Rd, Wagener, SC 29164 www.302polo.com
- Aiken Polo Club** 803-643-3611
525 Laurens St. SW, Aiken, SC 29801 www.aikenpoloclub.org
- Langdon Road Polo Club** 803-644-7802
PO Box 325, Aiken, SC 29802 www.302polo.com
- New Bridge Polo & Country Club** 803-648-3699
862 New Bridge rd., Aiken, SC 29805 www.newbridgepolo.com



Photo by Larry Gleason

Polo Fields

C II Polo

4267 Wagener Rd. On Hwy 302, go east 8 miles from the intersection of Hwy. 78 and 302. Pass Langdon Rd. on your right. Continue on 302 another quarter mile, entrance on left.

Chime Bell

1040 Chime Bell Church Rd., Take Whiskey Rd. (Hwy 19) S. Go south approx 5 miles past the Aiken Mall. Turn right on Chime Bell Church Rd. Go straight at 1st stop sign. At 2nd stop sign turn left and make a quick right back on Chime Bell Church Rd. Entrance on right with brick pillars and black fencing.

Edisto Polo Farm

1200 Bethcar Church Rd. Take Hwy 302, go east 10 miles from the intersection of Hwy. 78 and 302. Turn left on Burkelo Rd. Go approx 3 miles to stop sign and turn right on Coleman Bridge Rd. Go approx 5 miles, Rd. changes to Bethcar Church Rd. Just past the church and the cemetery is a stop sign at Camp Rawls Rd. Go straight across and approx 2.5 miles. Entrance in left.

Isinya Farm

381 Langdon Rd. Take Hwy 302, go east 8 miles from the intersection of Hwy. 78 and 302. Turn right on Langdon Rd., Isinya is the first driveway on the right.

Loughrea Plantation - Brigadoon Polo

735 Cedar Branch Rd. Take Hwy 302, go east 10 miles to Mackey Scott Rd. (2 miles past Langdon Rd.). Go right. Go approx 2.5 miles, Rd. changes from asphalt to dirt. Loughrea is on the right with black fencing. Using Hwy 78, go east 8 miles to Cedar Branch Rd., go left. Go approx 2 miles to Loughrea on the left.

Meadow Hill - Barrington Polo

491 Burkelo Rd. Take Hwy 302, go east 12 miles to Burkelo Rd. Burkelo Rd. is the first Rd. after the Wexford Mill entrance. Turn left on Burkelo and Meadow Hill Farm is on right with black fencing. Horse trailers & spectators can enter the farm via the 302 entrance. Continue on Hwy 302 past Burkelo Rd. about 1/4 mi to drive entrance marked as 5003 Wagener Rd. on left.

New Bridge Polo Club

862 New Bridge Rd. Take Hwy 302, go east 5 miles from the intersection of 78 and 302 to New Holland Rd. Go left. Go approx. 1.5 miles to New Bridge Rd. Go left. Go approx 2 miles to New Bridge Polo Club on left. From 118 bypass, take Wire Rd., go 1.2 miles to New Bridge Rd. Go right 3.6 miles to New Bridge Polo Club.

New Haven Farm

372 Langdon Rd. Take Hwy. 302, go east 8 miles from intersection of Hwy. 78 and 302. Turn right on Langdon Rd. New Haven is the first driveway on the Left.

OC Farm

3060 Gardenia Rd., Blackville, SC (East of Springfield)
Take Hwy 302, go east from intersection of Hwy 78 and Hwy 302. At intersection of Hwy 302 and Hwy 4, continue east on Hwy 4 into Springfield. Turn left at stop sign. Take 1st right on Hwy 3. Continue on Hwy 3 to stop sign. Turn right on Hwy 3 and proceed 2 miles to Gardenia Rd. (white house on corner) and turn left. OC Farm is on the right about 3 miles down. Practice field entrance is the 2nd gate - park under the trees.

Powderhouse Field

950 Powderhouse Rd. In Aiken, take Pine Log Rd. to Powderhouse Rd. There is a self-storage and an Exxon gas station on one side of Pine Log Rd. Turn towards the side of Powderhouse that does not have the gas station or the self storage. Entrance to the field is approximately 1/4 mile on the right.

Quartermore Farm

341 Flowing Well Rd. Take Hwy 302, go east 12 miles from the intersection of Hwy. 78 and 302 to Flowing Well Rd. Flowing Well Rd. is the first left after the South Edisto River bridge. Go



Photo by Larry Gleason

Storm Branch Polo Farm

2930 Storm Branch Rd. Two choices: Option 1 is good for horse trailers - take Pine Log Rd. west to Silver Bluff Rd. and go west past Woodside Plantation. Go for approximately 6-7 miles and look for Storm Branch Rd. - turn right. Go approx 2 miles to stop sign and go right again following Storm Branch Rd. Farm is another 2 miles up on right with black fencing. Option 2 has more traffic but is shorter. Take Pine Log Rd. west and be careful to follow signs for Pine Log Rd. as there are a few "forks" in Rd. Go 11 miles after the BP gas station in Aiken (where Silver Bluff and Pine Log fork) to the flashing yellow light at Storm Branch Rd. There is a Four Seasons gas station on the corner. Go left 1/2 mile to the farm entrances on the left.

Whitney Field

Mead Avenue in the historic horse district between Sumter and Magnolia Streets (the 220-399 block of Mead Avenue). On polo days, you will see a sign that says "Polo" that will direct you to the field. From Downtown Aiken: Take Richland Avenue to Chesterfield Street. Turn Right on Chesterfield (SC-19). Go one mile, then turn Left on Mead Avenue. Like all the important streets in the historic horse district, this is an unpaved road. Whitney Field will be on your right in approximately 0.2 miles. It is down a drive that leads through a small grove of trees. Matches are at 3pm during March- July and Sept.- Nov.

Winfield Farm

N81 Coleman Bridge Rd. Take Hwy 302, go east 5 miles from the intersection of Hwy. 78 and 302 to Coleman Bridge Rd. Go

Hiking, Riding, Walking Trails

Cathedral Aisle, Hitchcock Woods

South Boundary & Laurens St., Aiken, 803-642-0528, Open year round, dawn to dusk. Three-mile loop. This easy, three-mile Cathedral Isle Trail has a colorful history as well as beauty going for it. It is part of a 65-mile network crisscrossing Hitchcock Woods, a protected forest within the City of Aiken for over 50 years. Primarily trails and old sandy roads, the area is open to equestrians, hikers, dog walkers, joggers, and horses with carriages. No bikes or motorized vehicles are permitted. No fee but donations to the Hitchcock Foundation are welcome. Directions: Accessible from South Boundary & Dibble Rd. From US-1 in Aiken, drive south on York Street, and then turn right onto South Boundary Street. Continue downhill and look for the parking area at a gated road.



Photo by Larry Gleason

South Boundary & Laurens St., Aiken, 803-642-0528, Open year round, dawn

to dusk. With its marked trail network of approximately 65 miles, Horse Trail at Hitchcock Woods offers many different riding opportunities in a 2,000 acre sandy woodland within the city limits of Aiken. Primarily trails and old, sandy roads, the area is open to equestrians, hikers, dog walkers, joggers, and horses with carriages. There are also designated hunt trails with fences for equestrians. Bicycles and motorized vehicles are not permitted. No fee but donations to the Hitchcock Foundation are welcome.

Directions: Accessible from South Boundary & Dibble Rd. From US 1 in Aiken, drive south on York Street and turn right onto South Boundary Street. Continue downhill and look for the parking area at a gated road.



Carolina Bay Nature Reserve

Photo by Larry Gleason

Price Avenue, Aiken, 803-642-7630, Open year round, dawn to dusk. The Carolina Bay is surrounded by 14 plus acres of land purchased by the Aiken County Open Land Trust. Come and walk the trails, watch wildlife or just enjoy the pleasures of flora and fauna of the woods and waters in this natural wetland. No fee.

Directions: Accessible from Price Ave. From the intersection of US-78 and SC-19 in Aiken, drive 2.5 miles south on Whiskey Road (SC-19). Turn left onto Price Avenue. Carolina Bay will be on your left.

Virginia Acres Park

Price Avenue, Aiken, 803-642-7630, Open year round. The path is lit for evening use. On this flat, paved, multi-use, 1-mile oval path through a park area, you can run or walk counter-clockwise on the interior of the path, or skate board or roller blade clockwise on the outer part. Bicycles or motorized vehicles are not permitted. Pets are permitted on 3-foot leashes and scooping is required. Restrooms are available during center hours from (9-5 Saturday and 1-5 Sunday). Water fountains are located near the green fence and the bleachers at the playing field. No fee.

Directions: From the intersection of US-78 and SC-19 in Aiken, drive 2.5 miles south on Whiskey Road (SC-19). Turn left into the H. O. Weeks Center, just past the corner of Price and Whiskey. Park in the Center parking area.

Boyd Pond Park

373 Boyd Pond Rd, Aiken, 803-642-0314; www.aikencountysc.gov/tourism/bpp.htm, Open year round. Moderately difficult single-track trail with short climbs, approx. 5 miles. Wider, less difficult trail around pond. Surrounded by Protected Woodlands 25 Acres of bliss located on Boyd Pond Road Additional Information: 25 Acres located next to 207 acres that are owned by The Aiken County Land Trust and by Aiken County. Miles of bike trails and nature trails await you. Fishing, boating, hiking, camping, and other recreational activities abound at Boyd Pond Park. No fee.

Directions: Follow Silver Bluff Rd. (SC-302) for about 7 miles out of Aiken. Turn Right onto Boyd Pond Rd. Continue traveling on Boyd Pond Rd. for approx. 1½ miles to the Softball Parking area.

Sparkleberry, The Bishop Gravatt Center

1006 Camp Gravatt Rd., Aiken, 803-648-1817, Open year round, dawn to dusk Monday - Friday. (Phone ahead for other times.). Before you begin your hike, please register at the Bishop Gravatt Center Office. A moderately challenging, hilly, 2-mile loop trail. To reach the trail head, follow the dirt road from the parking area in front of the office. After you pass the pavilions on the left, and the tip of the lake on the right, you will locate the trail head sign. Pets must remain on leashes. Water and restrooms are available in the Stuart Hall Dining Facility. No fee.

Directions: From Exit 29 on I-20 near Aiken, turn north on Two Notch Road (S-2-49). Drive .9 mile and turn left onto Kedron Church Road. Drive .4 mile to the Bishop Gravatt Center, and turn left at the entrance signs. Follow the dirt drive around the s-curve. The office is in the dark brown building on the left, across from the post-and-rail fence.

Henderson Heritage Preserve

Preserve lies between Mayfield Rd. and Croft Mill Rd., Aiken. 803-734-3886. Open dawn to dusk. Hilly, rugged, unmarked firebreak trails loop through this natural preserve. Approximately 6 miles of trails. No fee.

Directions: Upper trail - From Exit 18 on I-20 near Aiken, drive south on SC 19 for 2.2 miles and turn right onto Mayfield Road (dirt). The parking area is approximately 0.9 mile on the right. Pass the first gate, and the pond, and park at the second gate. Begin the trail at either gate. Lower trail - From Exit 18 on I-20 near Aiken, drive south on SC 19 for 3.2 miles and turn right onto Croft Mill Road. The parking area is approximately 1.3 miles on the right.

Jungle Nature, Aiken State Natural Area

1145 State Park Road, Windsor, 803-649-2857. Camp Reservations, call 1-866-345-7275 or www.SouthCarolinaParks.com. Open year round. 9am-6pm, until 9pm Friday & Saturday during Daylight Savings Time. Level, easy to follow 3-mile loop through wetlands, and mixed pine and hardwood forest. Be on the lookout for iridescent dragonflies, and a variety of birds, snakes and other wildlife. Pets are permitted on leashes. Restrooms are available near the picnic area. No fee.

Directions: From Aiken, drive southeast on US 78 to the town of Windsor and turn left onto Aiken County S-53. The entrance to Aiken State Natural Area is approximately 5.0 miles. Enter the park, and turn left. The trailhead is to the right of the playground.

Aiken Gopher Tortoise Heritage Preserve

Windsor Road, Windsor, 803-734-3886, Open year round. Dawn to dusk.

Moderately difficult mix of roads and trails. Approximately 16.5 miles of trails of endangered longleaf pine and wire grass. A variety of animals and birds can also be encountered. Horseback riding in groups no more than five is permitted. No bicycles or motorized vehicles permitted. No fee.

Directions: From Aiken, drive south on US-78 for 12 miles to Windsor. Approximately 0.5 mile beyond the sign for Aiken State Park turn left onto Spring Branch Road (Aiken County S-2-212). Spring Branch becomes Windsor Road and dirt after approximately 1.4 miles. To the south parking area: Continue on Windsor Road for another 2.0 miles and turn right onto Centerwood Road. Drive 1.4 miles and turn left onto Long Cane Road (Just past Spring Branch Church). The parking area will be on your left. To the north parking area: Continue on Windsor Road for another 4.0 miles and turn right onto Oakridge Club Road. Drive 0.9 mile and the parking area is on the left.

Redcliffe State Historic Site, Beech Island

Location: 181 Redcliffe Rd., Beech Island, SC, Contact Info: 803-827-1473

Open Ride: Easy to follow. 1/4 mile trail. Trail head at bottom right corner of field in front of home. The trail is mostly downhill through mixed hardwood and pine forest, with tall bamboo stalks, towering magnolias, and cool green foliage. Pets are permitted on leashes. Restrooms are available at the office. No fee.

Directions: From North Augusta, drive approximately 8 miles south on SC 125, which joins with US-278. Stay on US-278 when it separates to the left. Drive approximately 2 miles and turn right onto Hammond Road (Aiken County S2580). Drive .2 mile and turn right onto Redcliffe Road. The park gate is .4 mile on the right. Enter through the gate and drive to the parking area toward the back of the mansion.

Spann-Hammond Park

Spann-Hammond Rd., Beech Island, 803-642-7559 (M-F 8am - 5pm) www.aikencountysc.gov/tourism, Open year round, dawn to dusk. Easy, level path around a scenic pond, a ¼ mile loop. Pets permitted on leashes. No Fee.

Directions: From Exit 1 on I-20 at North Augusta, drive south on SC-230 to the junction with US-1/US-78. Turn left onto US-1/US-78, drive 1.5 miles and turn right onto US-278/SC-125. Stay on US-278 when it splits to the left. Drive approximately 2 miles and turn left onto Spann-Hammond Rd. (Just before Redcliffe Plantation). The park is on the right at a switch back curve on the top of the hill.

Silver Bluff Audubon Center & Sanctuary

4542 Silver Bluff Rd., Jackson, 803-471-0291, Trails open year round

Mondays-Saturdays, 9am-5pm. Closed Sundays and Christmas Day.

Moderately difficult, along 2.4 miles of the Savannah River. With 3,154 acres of upland pine forest, hardwood bottomlands, fields, lakes and streams, it is typical of the Coastal Plains of Georgia and the Carolinas. Habitat and wildlife diversity make Silver Bluff a favorite destination for those interested in birds, wildflowers, photography, or a quiet walk. No fee but donations to Silver Bluff Sanctuary are accepted.

Directions: From downtown Aiken travel south on Chesterfield St S (SC-19). Turn slight right (at Honey Ham Store) onto Silver Bluff Rd. (SC-302). Continue on SC-302 until you reach the Audubon Center (approx. 18.5 miles out of downtown).



ate preserve has 1,076 feet of river frontage on one of the few remaining river shoals of the Savannah River. These shoals harbor the rare rocky shoals spider lily. There are rock formations that may be remnants of ancient Native American fishing weirs. The trail follows an old roadbed behind the pipe gate, down to the power line. Here, you must turn left and go up to the next ridge and cross over. The trail parallels a stream to the river bluffs, then follows an old logging road back to the power line. This is a habitat for the very rare relict trillium, which is on the federal endangered species list. No fee.

Directions: From the intersection of I-20 and SC 230, travel SE on SC 230 about .5 mile (toward North Augusta). Take the first right, travel .2 mile and turn right again. Travel .3 mile and pass through an open gate. The parking lot is on the left between two pipe gates.

Greenway National Recreational Trail

Riverview Park Dr, North Augusta, SC. 803-441-4310, A redeveloped railroad right-of-way, transformed into a National Trail, makes this path unique and a recreational dream. The paved path is accessible on foot, bike or rollerblades. The 8 plus mile path meanders along the Savannah River and across the city terrain, with benches and water fountains along the way. White-tail deer, rabbits, fox and birds are spotted by many visitors. Open dawn to dusk. No charge. Directions: Exit 5 off I-20. Follow Hwy. 25 into North Augusta. Take a left when Hwy 25 splits to become Georgia Ave., at CVS Drug Store. Turn Right onto Buena Vista Ave. Turn Left at Riverview Park Drive and follow signs to parking and Greenway entrance.

Brick Pond Park

88 Georgia Ave., North Augusta, SC. 803-441-4300; www.northaugusta.net Open year round, from dawn until dusk. Enjoyable, easy to follow paths. Located adjacent to the NA Greenway Trail, this 62-acre park is a natural habitat for animals and birds and includes 4 ponds, walking trails, boardwalks, waterfalls and a pavilion. No charge.

Directions: From North Augusta: Take Georgia Avenue (Hwy. 25) to Center Street just before the 13th Street Bridge to Augusta. Turn right onto Center Street and follow down the hill to the park. Parking is available. At the end of Center Street (turns into gravel) take a right or a left and you will see "Brick Pond Park Parking" directions at both ends of the park. Additional paved parking is available at the entrance to the North Augusta Greenway Trail off of Riverside Boulevard. From Augusta: Take 13th Street Bridge into North Augusta. Take the first left just over the bridge onto Center Street.

Fishing & Hunting

The Savannah River

A tree-covered flood plain and hillsides provide pleasant scenery while abundant oxbows provide superb fishing. Enjoy catching largemouth bass, hybrid bass, striped bass, crappie, bream, redbreast, and perch.

Crackerneck WMA (USDA) 803-725-3663

All individuals utilizing the WMA are required to sign in prior to entering the area and sign out upon leaving. This procedure must be followed. Call ahead for complete regulations.

Jackson Landing

Take Jackson Rd to Fisher Rd, then to Landing Rd. Hard surface ramp, handicap accessible dock, fishing area, gravel parking.

Riverview Park Boat Ramp, 803-441-4300

Hammonds Ferry Rd, North Augusta. Hard surface ramp, dock, paved parking and two new fishing piers available. Primitive campsites nearby. Reservations are required to camp.

Silver Bluff Landing, Jackson, Silver Bluff Rd to Bluff Landing Rd. Small craft access. Well-maintained area.

The South Edisto River

A natural cathedral of swamp, hardwoods and cypress follow this blackwater river. Catch pinfish, catfish, largemouth bass, eel and bream.

Aiken State Natural Area 803-649-2857

1145 State Park Rd, Windsor. 4 lakes, river w/ hard surface ramp. Canoe/rental and nature trail, picnic, and campsites.

Davis Bridge Landing, Located off of SC 4 on Veterans Rd between Salley and White Pond. Small craft access, parking and fishing areas.

Edisto River Landing, SC 21. Ramp, gravel parking.

Keadle's Bridge Landing, Off SC 4 and Windsor Rd. Hard surface ramp, limited parking.

Rocky Springs Boat Landing, Off New Holland Rd (302) between Couchton and N. Holland. Small craft ramp, parking area and fishing area from bank.

Area Fishing Ponds

Langley Pond 803-642-7559

Take Hwy.1 to Burnetown. Turn onto Langley Dam Rd. at light. Fishing area, swim area, and hard surface boat ramp. Open dawn till dusk, closed for special events.

Redcliffe State Historic Site 803-827-1473

181 Redcliffe Rd, Beech Island, SC. 2 acre lake.

South Carolina Wildlife & Marine Resources

Fishing & Hunting Licenses By Phone 1-888-4FISH

SC Online access www.dnr.state.sc.us

SC Wildlife

& Marine Resources Department 803-734-3888

PO Box 167, 1000 Assembly St, Columbia, SC 29202.

Operation Game Thief 800-922-5431

Public Boat Ramp Locations 800-ASK-FISH

Hunt & Fish Clubs

Carolina Star Gun & Hunt Club 803-649-0878

371 Cedar Branch Rd, Windsor, SC. Situated on 234 acres, this facility hosts a variety of shooting sports activities and can accommodate a variety of special functions. Hunting, sporting clays, trap shooting. www.carolinastar.com

Cowden Plantation 803-471-3616

383 Brown Rd, Jackson, SC. Over 10,000 acres of deer, hog, turkey, duck, dove, quail, bass, bluegill and farm catfish. Appointment required. Accommodations available.

CRACKERNECK WMA 803-725-3663

Consists of 4,780 acres of US Government land. Fishing and hunting for deer, turkey, waterfowl and small game. Anyone utilizing Crackerneck is required to sign in prior to entering and sign out upon leaving. Anyone not following this procedure will be considered trespassing. Contact USDA Forest Service, 725-3663, for complete rules and regulations.

Quail Trough Hunting Preserve 803-648-5483

2032 Edgefield Rd, Aiken, SC. Dennis Willing, Over 500 acres. Oct 1-April 1.

Oak Ridge Hunting Preserve 803-648-3489

1002 Hatchaway Bridge Rd, Aiken, SC. Quail hunting by reservation. Price includes guide, dogs and jeep. Dressing quail available. Serving hunters from all over the US since 1966.

Alternative Sports

Aiken Skate Park 803-642-7631

1700 Whiskey Rd, Aiken. Call for session and fee information.

The Bishop Gravatt Center 803-648-1817

1006 Camp Gravatt Rd, Aiken, 648-1817. Challenge course designed to develop leadership skills and increase self-esteem and confidence. www.bishopgravatt.org

Carolina Dragway 803-471-2285

302 Dragstrip Rd. Jackson. 1/8 mile drag racing track. www.carolinadragway.com

Disc Golf Course 803-441-4300

100 Riverview Park Dr., North Augusta, SC This 18 Hole Disc Golf Course is host to the world's top professional and amateur players each year. The course features Innova DisCatcher targets and concrete tee pads on a diverse terrain.



Rental Facilities

Aiken Chamber of Commerce 803-641-1111
121 Richland Ave E, Aiken. Acc. 40. www.aikenchamber.net
Aiken Co. Parks, Rec. & Tourism 803-642-7559
902 Vauclose Rd., Aiken. Several facilities throughout the county.

www.aikencountysc.gov/tourism

Aiken Municipal Auditorium 803-642-7654
215 The Alley, Aiken. Acc. 200 theater, 60 class., 300 recept.
Bishop Gravatt Center 803-648-1817
1006 Camp Gravatt Rd, Aiken. Facilities and scenic area combine to make for a pleasant stay. 2 meeting areas, largest accomm. 100+. www.bishopgravatt.org

City of Aiken Parks, Rec. & Tourism 803-642-7631
1700 Whiskey Rd, Aiken. Several facilities available.

Hampton Inn 803-648-2525
100 Tamil Dr, Aiken. Acc. 35 theatre, 18 class., 40 recept.

Hilton Garden Inn 803-641-4220
350 Eastgate Dr., Aiken. 1400 sq. feet of meeting space, on site dining. www.hiltongardeninn.com

Hippodrome 706-823-3325 or 803-278-4785
US 1, N. Augusta. 45,000 sq.ft. indoor arena and 52,500 sq.ft. outdoor arena. RV hook-ups. www.northaugustahippodrome.com

Holiday Inn Express 803-648-0999
155 Colony Pkwy., Aiken. Acc. 40 theatre, 23 class., 30 recept.

Jackson Community Center 803-471-2228
104 Main St., Jackson. Acc. 200, additional smaller area; acc. 30. Full industrial kitchen, BBQ Pit and Pavilion outside.

Living History Park 803-279-7560
Lake Ave, North Augusta. Natural amphitheater, educational cabin, prep kitchen and stage. www.colonialtimes.us

Newberry Hall 803-641-7087
117 Newberry St SW, Aiken. Acc. 200 standing, 100 class., 150 theater, or 120 banquet. Outdoor patio, tent possibilities,

North Augusta Community Center 803-441-4290
495 Brookside Ave, North Augusta, 14,000 sq ft banquet and meet. facility. Acc. 500 theatre & banq., 300 class., 500 recept.

Palmetto Terrace Ballroom 803-441-4350
100 Georgia Ave., North Augusta. Indoor facility with exterior terrace overlooking skyline. Kitchen on site. Acc. 600 floor, 425 reception, or 250 seated.

Rose Hill Estate 803-648-1181
221 Greenville St NW, Aiken. Secluded Winter Colony estate. Bar, clubroom, built-in presentation screen and comm/ catering kit. 130 theatre, recept. or banquet. www.rosehillestate.com

Sleep Inn & Suites 803-202-0209
921 Edgefield Rd, North Augusta, Accommodates 20.

USC-Aiken Conference Center 803-641-3587
471 University Pkwy, Aiken, Acc. 25-500 theatre, 25-400 class. or 20-100 banquet. www.usca.edu

Washington Cen. For Performing Arts 803-642-7654
124 Newberry St, Aiken. State of the art theater. Seats 300.

The Willcox 803-

Golf

Palmetto Golf Club, founded in 1892, is the fifth oldest in the nation. The Aiken Golf Club is the first to offer womens' tees.

Aiken

The Aiken Golf Club 803-649-6029

555 Highland Park Dr., 18 holes/ par 70/walk & cart (semi-private) The club, built in 1914 and located in downtown Aiken, was designed by Donald Ross and remodeled by Jim McNair. The narrow course, with deep rough and undulating greens, is a true shot maker's course. www.aikengolfclub.com

Cedar Creek Golf Club 803-648-4206

2475 Club Dr., 18 holes/par 72/walk & cart (semi-private) This course, a few miles south of Aiken, was designed by Arthur Hills with his signature greens that give the illusion they are farther away than they are perceived. Golf Digest has given the course a "4-Star Outstanding" review and Golf Magazine ranked the residential property as one of America's "Top-20 places to semi-retire." www.cedarcreekgolfclub.com

Houndslake Country Club 803-648-3333

Houndslake Dr., 3 nine hole courses, all par 36/walk & cart (semi-private) The course was designed by Joe Lee. (Azalea, Dogwood, Laurel) Play is limited to members and lodge guests. (Guest House lodging; 648-9535) www.houndslakecc.com

Northside Golf Club 803-643-1034

2287 Columbia Hwy. N., 9 hole / par 36 (public) Designed by Alex Hamilton in 1992. The wide open links-style play course was built on a 75 acre cow pasture. Water hazards on four holes.

Palmetto Golf Club 803-649-2951

275 Berrie Rd., 18 hole / par 71 (private) Among the ten founding clubs of the United States Golf Association, the course is one of America's oldest, founded in 1892. Past champions include Ben Hogan, Sam Snead, Henry Picard and Gene Sarazen. The course was redesigned and the sand greens changed to grass by Alister Mackenzie in 1934 just after he completed work on the Augusta National.

The Reserve Club at Woodside Plantation 803-648-1601

3000 Reserve Club Dr., 18 hole / par 72 (private) Aiken's newest course was designed by Steve Nicklaus.

Woodside Plantation 803-649-3383

1000 Woodside Pl. Drive, 9 hole / par 3, (2) 18 hole / par 72 (private) The courses at this private club were designed by Rees Jones, Bob Cupp, and Nicklaus Design.

Graniteville

Midland Valley Country Club 803-663-7332

Hwy 1 / 151 Midland Drive 18 holes / par 71 / cart (public) Between Aiken and Augusta, the course was Ellis Maple's first design. Many area tournaments take place at this course because of the large undulated greens. Reservations may be made one day in advance. Limited play on weekends.

Sage Valley Golf Club 803-663-0900

474 Bettis Academy Rd., 18 holes / par 3 (private) Designed by Tom Fazio.

New Ellenton

New Ellenton Golf Course 803-652-7867
301 Fairway Dr., 9 holes/ par 36/ walk & cart (public) Bermuda greens.

Leesville

Cooper's Creek Golf Club 803- 894-3666
700 Wagener Hwy., 18 holes/par 72/walk & cart (semi-private) 530 acre course nestled in a striking pine forest with rolling hills & lakes.

Ridge Spring

Ridge Spring Golf Club 803-649-3366
500 Bogeyville Rd., 18 holes/ par 72/ walk or cart (public) Bermuda greens.

North Augusta

Mount Vintage Golf Club 803-278-5000
215 Mt. Vintage Plantation Dr., 18 holes / par 72 (semi-private) The course was designed by Tom Jackson, and is both in Edgefield and Aiken Counties. It has been the host of the Asahi Ryokuken LPGA Tournament since 2003. Mount Vintage, with its verdant and dramatic layout, rolls over the last ridge of the Appalachians.

North Augusta Country Club 803-279-1198
2001 Gregory Lake Rd. Pro Shop 803- 279-0704

The River Golf Club 803-202-0110
307 Riverside Blvd., 18 holes/par 71, walk & cart www.rivergolfclub.com The course is set along the banks of the Savannah River and designed by Jim Fazio. Two years after opening in 1997, it was named one of the top five new affordable courses in America by Golf Digest. There are bent grass greens, and is built as a Hilton Head style course with mostly flat fairways and water on 11 holes.

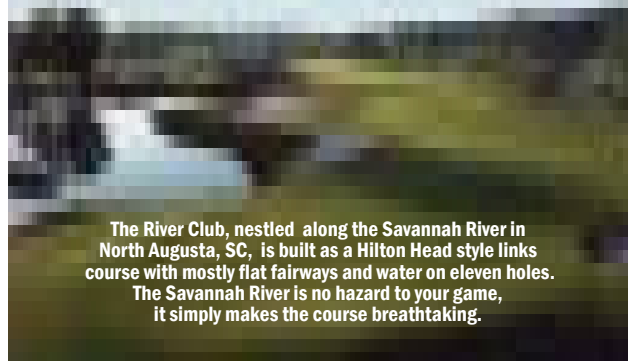
Miniature Golf

Hole-N-One Miniature Golf & Games 803-643-8846
3197 Whiskey Rd., Aiken, SC. The only miniature golf course in Aiken County is a complete fun zone. Located just 1 mile S. of Aiken Mall, it's equipped with video and prize redemption arcade, snack bar, and a great batting cage. This family favorite makes a unique visit for grandparents too!

Driving Ranges

Clubhouse Unlimited 803-643-8846
1096 Toolebeck Rd., Aiken, SC. Driving range, full service pro shop and deli.

Carolina Springs 803-279-9803
1301 Womrath Rd., North Augusta. Fully irrigated, bermuda tees, practice bunker, and putting green. Expert club repair and refinishing. Certified instructor available. Open summer (10am-9pm) and (winter) 10am -8pm.



The River Club, nestled along the Savannah River in North Augusta, SC, is built as a Hilton Head style links course with mostly flat fairways and water on eleven holes. The Savannah River is no hazard to your game, it simply makes the course breathtaking.

HorsePlay

Horseplay was a partnership between the Aiken Center for the Arts and the United Way of Aiken County to raise monies for the ArtPlay Fund which provided art scholarships for children and the elderly. It's popularity was evident from the beginning, as all sponsors were sold out within a matter of hours in December, 2002. Sponsors selected drawings from submitted entries. Artists spent the next 9 months painting the 31 horses.



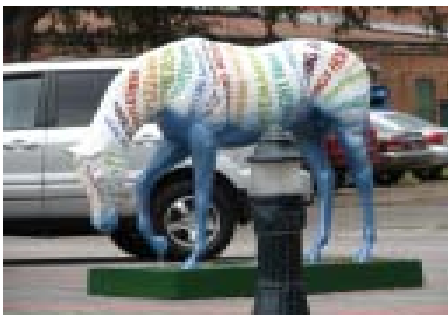
Splendor in Glass by Jo Ann King
Aiken Center for the Arts, 122 Laurens St. SW



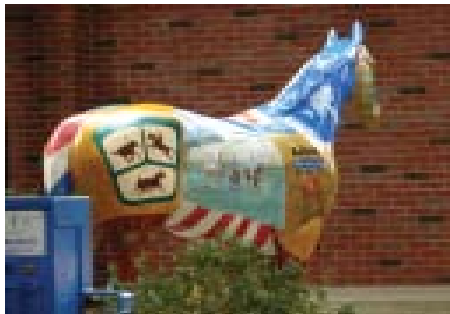
His Spirit by Corinne Kennedy
Sotheby's, 120 Laurens St. NW



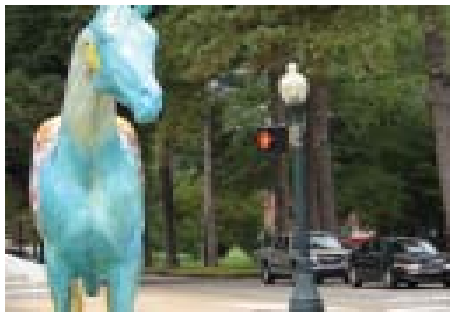
Dustin' Hoofman by Leslie Alexander
Aiken Community Playhouse, 126 Newberry St.



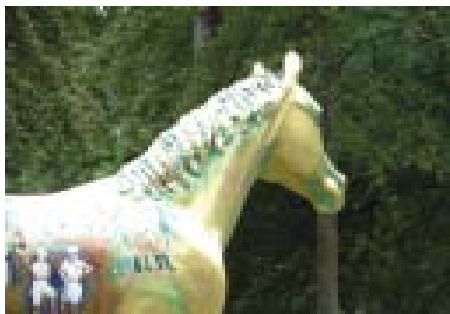
Horse of a Different Color by Michael Fowler
Newberry Street Festival Center, Newberry St.



Palmetto American Equine by Henry Drakeford
Municipal Bldg., Rear Entrance in The Alley



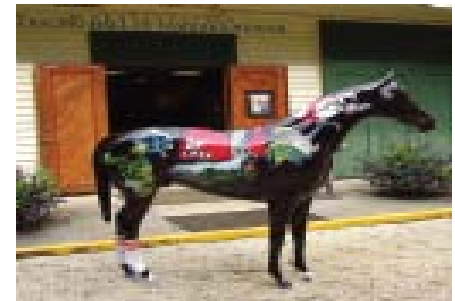
The Patriot by Beth Robertson Wade
Morgan Circle, Corner of Laurens St. & Park Ave.



Semper Viridis by Kathy Nowlin
Aiken Preparatory School, 153 Florence St. NW



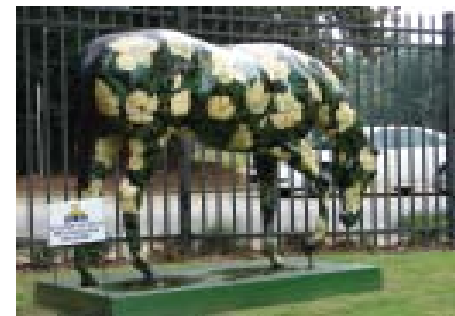
History Maker by Kay Payne
Green Boundary Club, 780 Whiskey Rd.



Hav Sum Fun by Barbara Nelson
Racing Hall of Fame, 135 Dupree Place



Stonerside by Al Beyer
Racing Hall of Fame, 135 Dupree Place



Magnolia Mare by Nanette Langer
Hopelands Gardens, Whiskey Rd. & Dupree Pl.

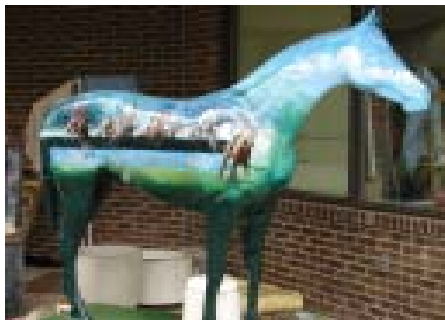
Aiken County Park System



Down by the water by Elin Neal.
USC Aiken at Etheredge Ctr, 471 University Pkwy.



From Around by Deborah Martinez
Woodside Plantation, 1419 Silver Bluff Rd.



Regions Spirit of Aiken by Al Beyer
USC Aiken, 471 University Pkwy.

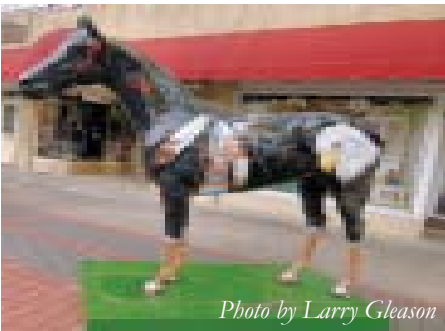


Photo by Larry Gleason

Many horses, like, Spirit, were purchased by individuals, and are no longer available for public view.
Spirit by Robbie Bellamy



Aiken County Recreation Center, Aiken-Augusta Hwy., Rt. 1, Graniteville, 803-663-6142. 2 playgrounds, covered picnic shelter, multipurpose room, concession stand, kitchen, basketball, tennis, walking track, swimming pool. Rental.

A.L. Brodie Park, Roberts St. off Hwy. 39 in Perry. Ball field, tennis court, basketball court, playground & covered picnic shelter.

Belvedere Dixie Youth (Gardener Key), off Hwy. 25 on Rita Ave. in Belvedere. Ball fields, batting cage, concession stand, and playground.

Boyd Pond Park, 373 Boyd Pond Rd, Aiken, 803-642-0314. Softball, soccer complex and planetarium.

Ernest Weaver Park, located off Highway 19 (north) on Weaver Street. Facilities include a playground, covered picnic shelter, a softball field, and a basketball court.

Gloverville Park, Off Hwy. 421 on Pine St. in Gloverville. Ball fields, playground, gazebo and picnic area.



Harrison-Caver Park, Hwy 421, Clearwater, 803-593-4698. Tennis court, playground, lighted walking track, 3 softball fields, picnic area, soccer fields, concession stand. Rental.

Herb Marshall Park, Off H & H St. in Belvedere. Ball fields and an exercise fitness track.

Johnny Wood Park, Off Belvedere/Clearwater Rd. Softball field

and concession stand.

Langley Pond Park, Off Hwy. 1 at Langley Dam Rd. Swimming, boating, jet skiing, fishing, bathhouse, rest rooms, swim and beach area. Regattas races are held here annually. Future plans include picnic shelter, playground, walking trail and more.

Lollar Park, Off Hwy. 278/125 on Urquhart St. in Beech Island. Playground, field, and picnic area.

Lynwood Community Center, Eden Dr. off Hwy. 421 in the Midland Valley Area , 803-642-1467. Center is available for rent; playground, picnic area.

Roy Warner Memorial Park, Hwy. 39, 803-564-6149. Two miles outside of Wagener. Ball fields, tennis courts, basketball court, playground, concessions and community center. Rental.

Spann Hammond Park, Off Hwy. 278, in the historic district of Beech Island. Small pond, fishing dock, walking and hiking trail, handicap access., covered picnic shelters, benches and swings.

Spider Web Park, Hwy. 278, Petticoat Junction Community. Basketball court, playground and picnic area.

Thomas Park, Off Highway 25, Johnson Road in Belvedere. Lighted tennis court, two basketball courts (one lighted), playground area, and a covered picnic shelter.

Veterans Memorial Park, Off Richland Ave., Honoring veterans of the past, present and future.

White Pond Community Center, Past Windsor, off Hwy. 78. Playground and community center.



More Places to Play!

Aiken State Natural Area, 1145 State Park Rd, Windsor, SC., 803-649-2857. Sixteen miles E of Aiken off US 78. It offers a variety of outdoor recreation opportunities such as canoeing the Edisto River, fishing, picnicking, camping and hiking trails. Campsites can accommodate RV's and tents, with some primitive sites also available. Canoe and boat rentals available.

Citizens Park, 1060 Banks Mill Rd., Aiken, 803-642-7760. Five multi-purpose athletic fields. The park is host to regional and statewide baseball and softball tournaments.

Crescent Cities Park, on Severin Rd., Wagener. Playground, walking track and rest rooms.

Gregg Park, 113 Trolley Line Rd., 803-663-7552

Gregg Park Dixie Youth Field, 1470 Gregg Hwy, 803-663-9363

H.O. Weeks Center, 1700 Whiskey Rd., Aiken, 803-642-7630. Gymnasiums, classrooms, racquetball court, aerobics room, handicap-accessible playground, outdoor basketball courts, tennis center, a walking trail, ceramics and picnic shelters.

Living History Park, 299 W. Spring Grove Ave., North Augusta, 803-279-7560. The park is a natural amphitheater that also serves as a venue for various musical concerts throughout the year.

Redcliffe Plantation State Park, 181 Redcliffe Rd., Beech Island, 803-827-1473. The original 1800's home of Gov. James Henry Hammond. House tours, nature trail, picnic area.

Richardson's Lake Waterpark, 918 Richardson's Lake Rd, Warrentville, 29851, 803-663-3600. Complete with diving boards, slides and water trampolines! Open middle of May through the middle of Sept. Hours: 10:30-6:30

Riverview Park Activity Center, 100 Riverview Park Dr., 29841 North Augusta, 29841, 803-441-4310. Baseball and soccer fields, tennis courts, covered picnic shelters, playground, walking/jogging trail, horseshoe pits, boat landing, basketball courts, racquetball courts, disc golf and recreation/ activity center.

Salley Town Park, Pine Street, Salley. Swings, basketball court and tennis courts.

Smith Hazel, 400 Kershaw St. NE, 803-642-7634

Willie Whaley Park, off Hwy. 421, Caroline Rd. in Burnettown. Ball fields, multipurpose field, playground area.

Annual Events



Living History Demos: Last Sat. of each month, Jan.-Oct. at the Living History Park , 299 West Spring Grove Ave., North Augusta, SC. Downtown After Six, Aiken Downtown Merchants stay open late for festive evenings. 3rd Thursday in March, June, Sept. Story Time in Hopelands (Tues., March- May & Sept. - Oct.) Hopelands Gardens, Aiken, SC. Summer Concerts (Mon., May-Aug.) Hopelands Gardens, Aiken, SC. Music in the Park (Thurs. May-July) Maude Edenfield Park, 400 Buena Vista Ave., North Augusta, SC.

JANUARY

Camellia Show (3rd wkend) Aiken Mall, 2441 Whiskey Rd., Aiken, SC.

FEBRUARY

Antiques in the Heart of Aiken (1st weekend) Aiken Center for the Arts, 122 Laurens Street, Aiken, SC.

Battle of Aiken (Wkend after President's Day) Confederate Park, Powell Pond Rd, off I-20.

MARCH

Aiken Triple Crown (Last 3 Saturdays) Aiken, SC.

Aiken Farm Fest (Last wkend) 207 Chimebell Church Rd., Aiken, SC.

APRIL

Masters Golf Tournament, (2nd wk) Augusta, GA. Special activities in Aiken taking place in downtown Aiken this week also!

Aiken Horse Show, (1st Th.-Su.) at Hitchcock Woods.

Olde Towne Artisan Fair, (3rd Wkend) at the Living History Park

Strawberry Festival, (last Sat.) Mead Hall, 125 Pendelton St., Aiken, SC.

MAY

Lobster Race, (1st Fri.) Newberry St. Festival Center, Aiken, SC.



JUNE

Under The Crown, (1st Sat-Su) Living History Park, N. Augusta, SC.

JULY

Tomato Festival (2nd Sat.) Aiken County Farmers Market, 897 Richland Ave. E., Aiken, SC

AUGUST

Fried Green Tomato Festival (1st Sat.) Iron Horse Bar and Grill, 2510 Storm Branch Rd., Beech Island, SC.

SEPTEMBER

Aiken's Makin', (2nd F. & Sat.) Downtown on Park Ave., Aiken, SC.

Little Horse Creek Pow Wow (3rd F-Sun) at Langley Pond, Burnet-town, SC.

OCTOBER

Apple Festival, (1st Sat.) Aiken County Farmer's Market, 897 Richland Ave. E., Aiken, SC.

St. Mary's Chocolate Festival, (1st Sat.) St. Mary's, 118 York Street. SE, Aiken, SC.

Sassafras Festival, (1st Sat.) Sassafras Park, Hwy. 421, Burnet-town, SC.

Sweet Potato Festival, (3rd Sat.) Jacksonville Community Commission, 351 Huber Clay Rd., Langley, SC.

A Day To Remember, (3rd weekend) Living History Park , 299 West Spring Grove Ave., North Augusta, SC.

Spirits of Hallowed Eve, (Sat. before Halloween) Living History Park , 299 West Spring Grove Ave., North Augusta, SC.

NOVEMBER

Old Time Homecoming, (1st Sat.) Aiken County Farmers Market, 897 Richland Ave. E, Aiken, SC.

St. John's Apple Festival, (1st Sat.) St. John's Church, 104 Newberry St., Aiken, SC.

Parade of Carriages (2nd Sat.) Downtown Aiken, SC.

Westmuttster Dog Show, (2nd Sat.) Aiken Horse Park, Aiken, SC.

Blessing of the Hounds, (Thanksgiving Day) Hitchcock Woods, Aiken, SC.

One Table, (Thanksgiving Day) The Alley, Aiken, SC.

Salley Chitlin Strut, (1st Sat. After Thanksgiving), Salley, SC.

Christmas Tree Lighting, (1st Mon. after Thanksgiving) John C. Calhoun Park, West Forest Ave., North Augusta, SC

DECEMBER



Night of 1000 Lights, (2nd Thurs.) Downtown merchants stay open late for special holiday shopping and activities. Aiken, SC.

Antique & Gift Shops

Aiken
 North Augusta
 Other Areas

- A Little This, A Little That** 803-279-0201
105 E Marion Ave., North Augusta. M-Sat 10a.-6p. www.alittlethis.com
- Aiken Antiques & Auction** 803-221-3771
231 Marlborough St., Aiken. M-F 10a.-5p.
- Aiken Antique Mall** 803-648-6700
112 Laurens St. SW, Aiken. M-Sat 10a.-6p., Sun 1:30-6p.
- Aiken Center for the Arts Gallery Store** 803-641-9094
122 Laurens St. SW, Aiken. M-Sat 10a.-5p.
- Aiken County Historical Museum Store** 803-644-1010
433 Newberry St. SW, Aiken. T-F 10a.-4p., Sat-Sun 2-4:30p.
- Aiken County Visitor Center Gift Shop** 803-642-7557
113 Laurens St. SW, Suite 107, Aiken. M-F 10a.-5p.
- Aiken Drug Co.** 803-649-6286
101 Laurens St. SW, Aiken. M 8a.-8p. T-F 8a.7p., Sat 9a.-6p., Sun 11a.-5p.
- Aiken Mall** 803-649-0897
2441 Whiskey Rd.S, Aiken. M-S 10a.-9p., Sun 1:30-6p. www.shopmalls.com
- Aiken Office Supply & Book Shop** 803-648-8339
2560 Whiskey Rd., Aiken. M-F 8:30a.-7p., Sat 9a-6p.,Sun 1:30p.-6p.
- Antique Emporium** 803-643-9922
321 Richland Ave., Aiken. M-Sat 10a.-5:30p.
- Barbara Sue Brodie Needleworks** 803-644-0990
345 Hayne Ave., Aiken. M-F 10a.-5, Sat10a.-3p.www.barbarasuebrodie.com
- Beads & Baubles** 803-648-6858
226 Park Ave. SE, Aiken. T/W/F11a.-5p., Th 11a.-6:30p., Sat 11a.-4p.
- Birds & Butterflies** 803-649-7999
117 Laurens St. NW, M-F 9:30a.-6p. Sat 9:30a.-5p.
- The Bone-I-Fide Bakery** 803-644-7278
127 Laurens St., Aiken. M-F 9:30a.-5:30p., Sat 9:30a.-5p.
- The Book Stall** 803-644-0604
413 Hayne Ave., Aiken. M-F 10a.-5p. Sat 11a.-3p.
- Communiographics** 803-278-7217
1400 Georgia Ave., North Augusta. M-F 9a.-6p.
- Connie's Framing** 803-643-3696
118 Park Ave. SE, Aiken. M-F 9:30a - 5:30p. Sat 10a - 2p.
- Country Connection** 803-593-6748
Hwy 421, Burnettown. M-F, Sun 11a.-2p.



- The Curiosity Shop** 803-644-0004
202 Richland Ave., W, Aiken. M-Th. 10a.-5p., F.-Sat. 10a.-6p.
- Crystal Engravers** 803-502-0006
122 Laurens St. NW, Aiken. M-Sat 10a.-5p.
- Elliot Office Supply Gifts N' Things** 803-649-4151
115 Laurens St., NW, Aiken.M-Sat 9a-5p.
- Estate Jewelry Company** 803-279-8362
506 Georgia Ave., North Augusta. M-F 10a-6p, Sat 10a-2p.
- Equine Divine** 803-642-9772
126 Laurens St., SW, Aiken. Summer: M-Sat 11a-6p.
- The Greatest Gift** 803-502-0777
724 Silver Bluff Rd., Aiken. M-F 10a-6p. Sat 12p-4p.
- Guest Cottage Linens & Gifts** 803-649-4565
146 Laurens St. SW, Aiken. M-F 11:30a-5:30p, Sat 11:30a-3:30p.
- Horse Creek Traditions** 803-593-5800
1897 Jefferson Davis Hwy., Burnettown. W-Sat 11a-9p, Sun 12:30p-3p.
- Ivy Cottage Flowers & Gifts** 803-643-0535
206 Park Ave. SE, Aiken. M-F 8:30a-5p, Sat 8:30a-12p.
- Jackson Gallery** 803-648-7397
300 Park Ave. SW, Aiken. By appointment only. www.jacksonsgallery.com
- Kit & Caboodle** 803-279-7157
506 Edgefield Rd., Belvedere. M-F 9a.-5:30p., Sat 10a.-4p.
- Lamps, Shades & Things** 803-649-0370
588 Silver Bluff Rd., Aiken. M-W 10:30a.-6p., Th-Sat 10:30a-5p.
- Laurens Street Antiques** 803-642-6779
117 Laurens St. SW, Aiken. M-F 9:30a. - 5:30p., Sat 9a - 5p.
- MB Jewelry & Beads** 803-502-0200
145 Laurens St. SW, Aiken. M-S 10a.-5:30p., Sat. 10a-4p.
- The Necessary Arrangements** 803-641-4438
953 Dougherty Rd. SW, Aiken. Call for hours.
- Arts and Heritage Center of NA Gift Shop** 803-441-4380
100 Georgia Ave., N.Aug., 10a.-4p., T-Sat www.artsandheritagecenter.com
- Park Avenue Antiques & Gifts** 803-644-7253
343 Park Ave. SW, Aiken. M-Sat 10a.-5p.
- The Peach Tree** 803-642-5184
718-C Silver Bluff Rd., Aiken. M-F 10:30a.-6p., Sat 10:30a.-5p.
- Pitter Patter Children's Boutique** 803-643-8000
123A Laurens St. NW, Aiken. M-F 10a.-5:30p., Sat 10a-4p.
- Plum Pudding** 803-644-4600
101 Laurens St. NW, Aiken. M-Sat 10a.-6p. www.plumpuddingkitchen.com
- Rabold Gallery** 803-641-4405
146A Laurens St. SW, Aiken. W-F 10a.-5p, Sat 11a.-3p.
- Riverfront Antique Mall** 803-279-0900
5979 Jefferson Davis Hwy., North Augusta. T-Sun 10a.-7p.
- Savannah River Art Glass** 803-278-2818
203 Jackson Ave, North Augusta. M-F 9a.-5p.
- The Screenprint Factory** 803-649-7552
157 Laurens St NW, Aiken. M-F 9:30a.-5:30p.
- Singing Hills Antiques** 803-441-8805
417 West Ave., North Augusta. T-Sat 10a.-5p.
- Southern Moon Pottery & Gallery** 803-646-8170
239 Woodward Dr., Aiken. M-F 10a.-5p. www.southernmoon.net
- Tea Garden Gifts** 803-648-6124
131 Laurens St. SW, Aiken. M-F 9:30a.-6p., Sat 9:30a.-5:30p.
- Up & Away Balloons & Fudge Factory** 803-649-6569
115 Laurens St. NW, Aiken. M-F 9a.-5:30p., Sat 9a.-1p.
- York Cottage Antiques** 803-642-9524

